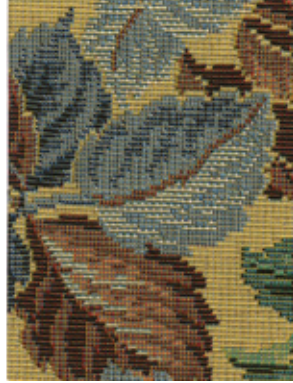
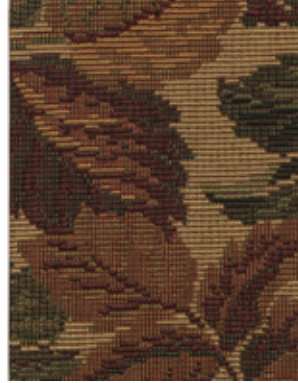




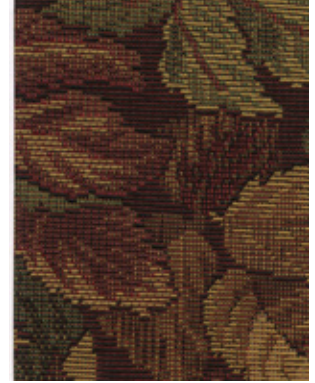
61110  
autumn



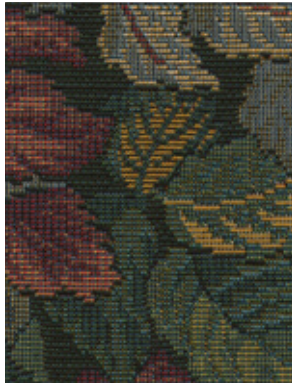
61114  
butter



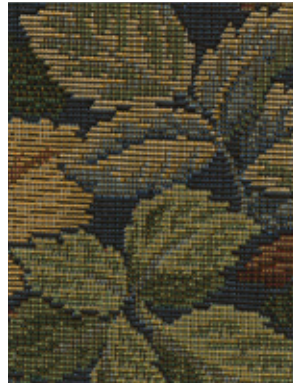
61111  
vintage



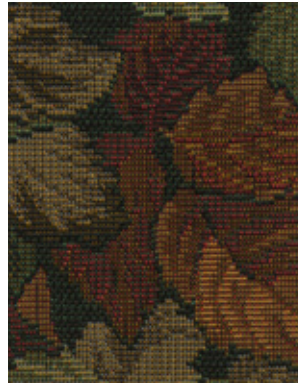
61115  
sangria



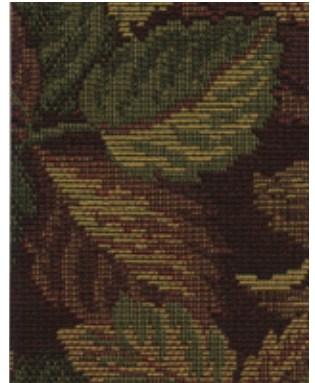
61112  
teal



61113  
blue



61109  
teak



61116  
cabernet

**Style**                      **Performance Fabric - Prestige**

---

**Specifications**

---

**Contents**                      52% polyester, 48% acrylic woven CRYPTON®

---

**Width**                              54"

---

**Repeat**                            13" v, 14.5" h

---

**Flammability**                  Passes california 191-53 technical bulletin 117, section e, passes ufac class 1, passes nfpa 260 prestige may comply with california technical bulletin 133 when used in conjunction with other suitable components.

---

**Moisture Resistance**

Prestige features a moisture barrier that stops moisture from penetrating the fabric and damaging the furnitruue's underpadding.

---

**Bacterial Resistance**

Prestige is engineered to resist odors, stains, and degradation caused by mold, fungus and algae and contains antimicrobial agents to resist and inhibit the growth of odor causing bacteria.

---

**Cleaning Code**                  w

---

**Maintenance**                  Please be sure to include CRYPTON in a regular cleaning and maintenance program. To be totally safe, do not use solvent-based cleaners as some (not all) may harm the fabric. The use of bleach solutions to clean CRYPTON is not recommended as bleach, not completely removed, could fade the fabric.

We suggest using CRYPTON Care upholstery cleaners to cean this fabric.

Please visit [cfstinson.com](http://cfstinson.com) for additional information.

Dye lots may vary slightly from samples shown.

\* This term and any corresponding data refer to typical performance in the tests indicated and should not be construed to imply the behavior of this or any other material under actual fire conditions.

THIS VIRTUAL COLOR CARD IS REPRESENTATIVE OF THE FINISHED COLOR TO BE SUPPLIED AND MAY NOT INDICATE AN EXACT MATCH. WHILE EVERY EFFORT IS MADE TO MATCH THIS COLOR TO A MASTER SAMPLE, SOME VARIATION MAY OCCUR DUE TO YOUR COMPUTER MONITOR'S INTERPRETATION. WE DO NOT RECOMMEND THAT YOU SPECIFY FROM THIS CARD AND CANNOT BE RESPONSIBLE FOR VARIATIONS IN SHADE BETWEEN THIS VIRTUAL COLOR CARD AND ACTUAL FABRIC. EXAMINATION OF AN ACTUAL FABRIC SAMPLE IS RECOMMENDED.

APPLICATION TESTING OF THIS PRODUCT IS RECOMMENDED.

©2008 Fabricmate, Inc. • All rights reserved • Unauthorized duplication of these materials is strictly prohibited. • Protected by U.S. copyright laws and international treaties.