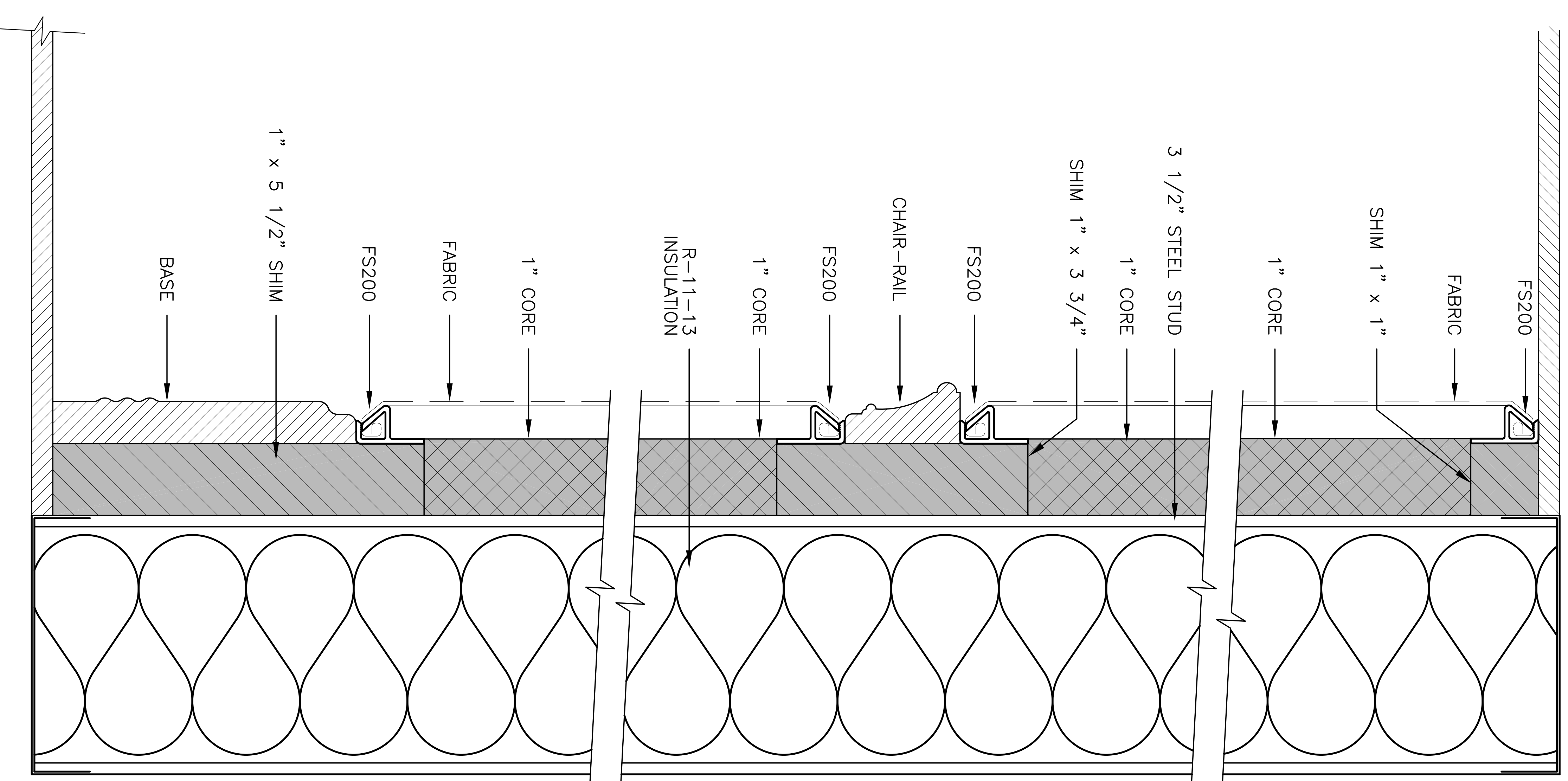
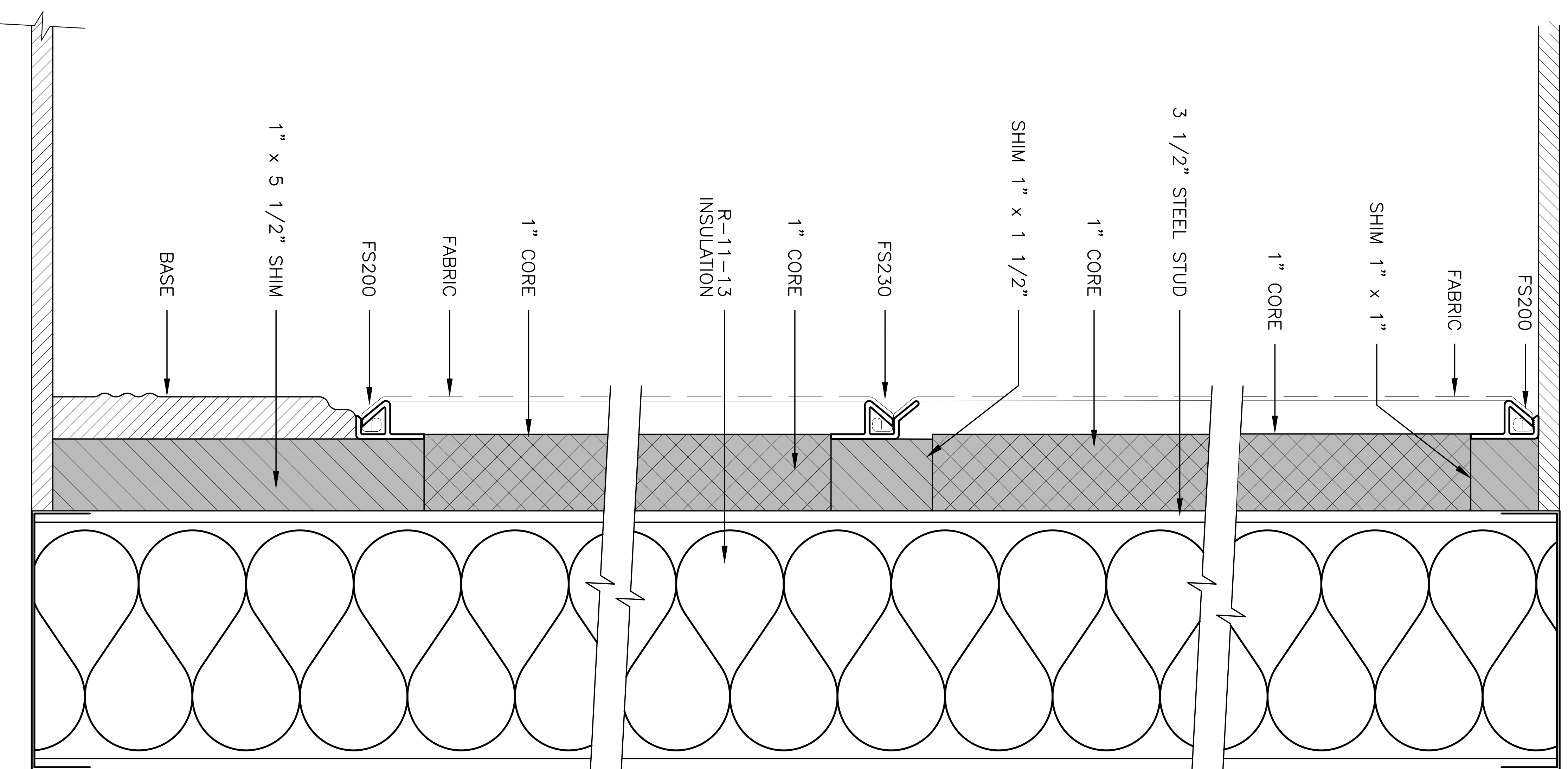


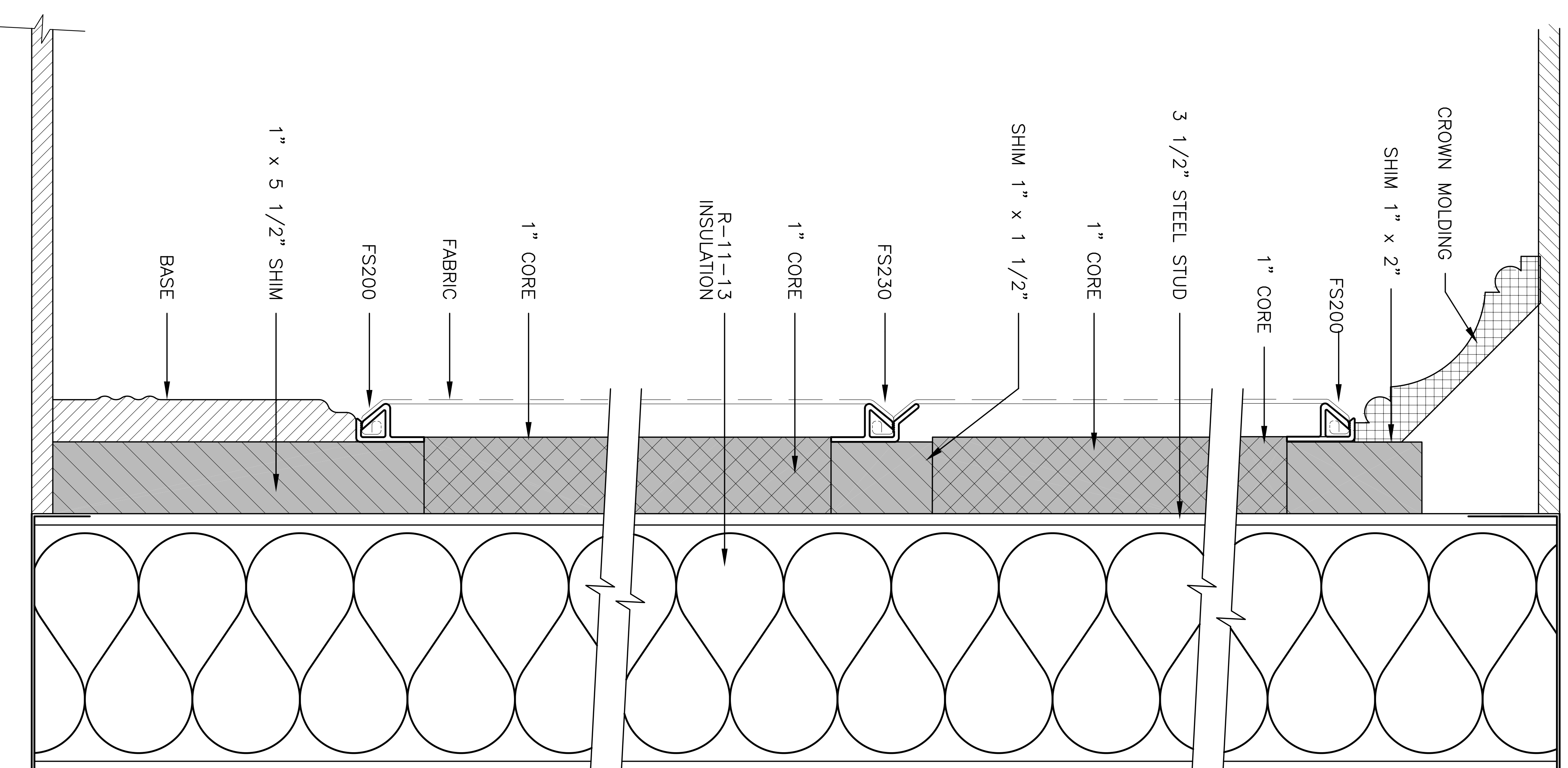
TYPICAL BASEMENT DETAILS / LAYOUTS



FULL **BEVELED JOINT WITH CHAIR RAIL (1" CORE)**



FULL **BEVELED JOINT WITHOUT CHAIR RAIL (1" CORE)**



FULL **BEVELED JOINT WITH CROWN MouldING (1" CORE)**