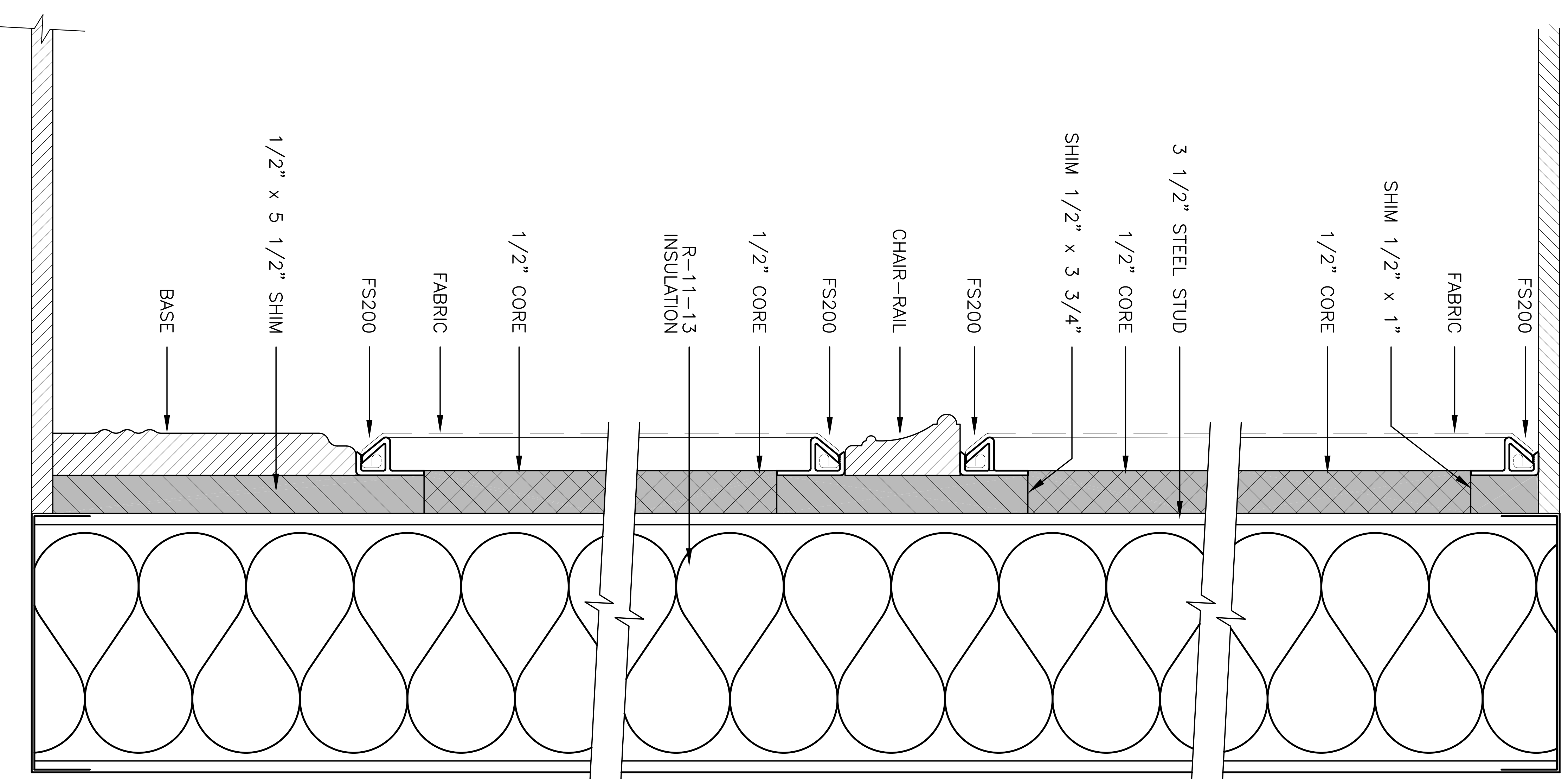
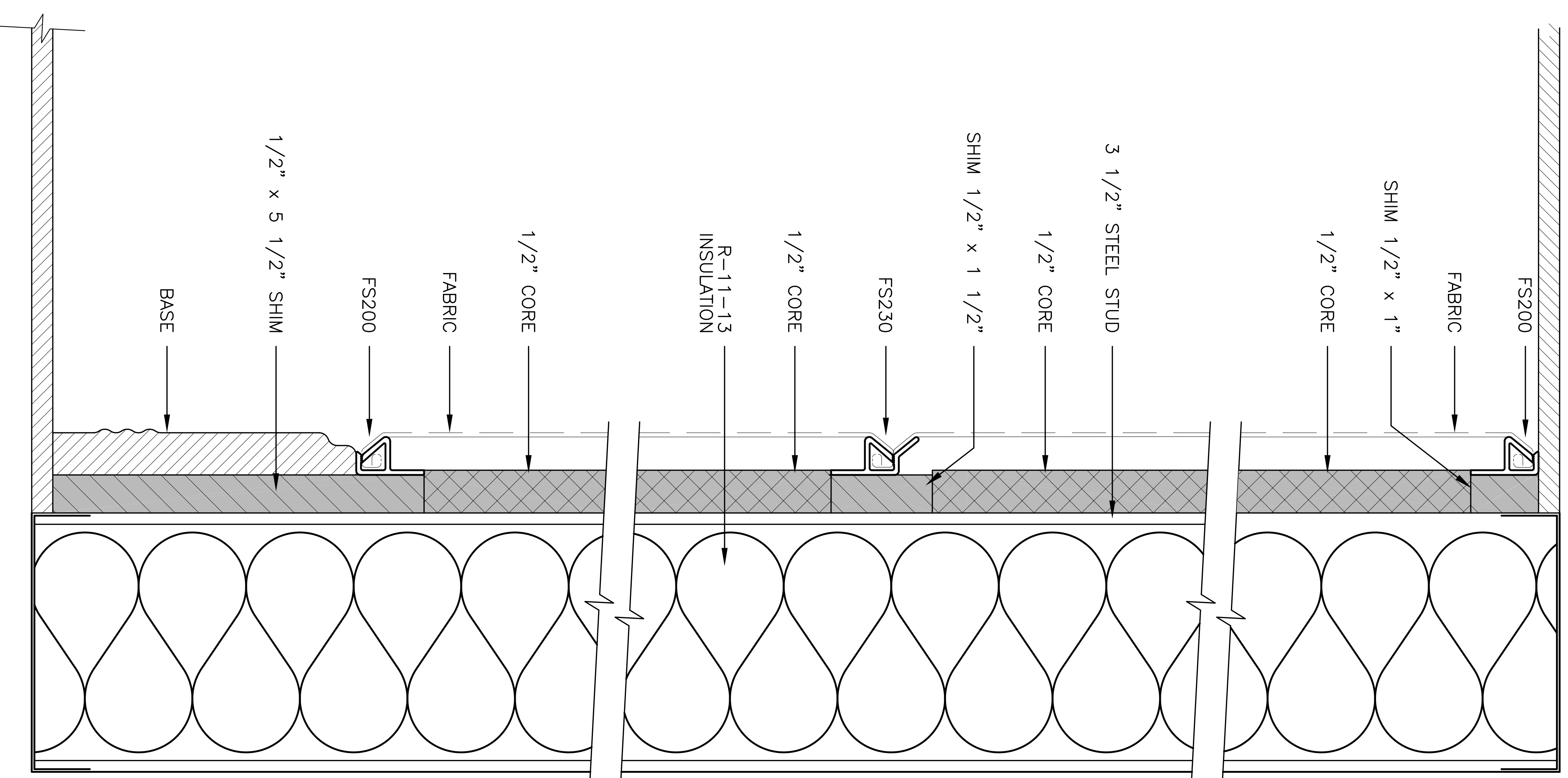


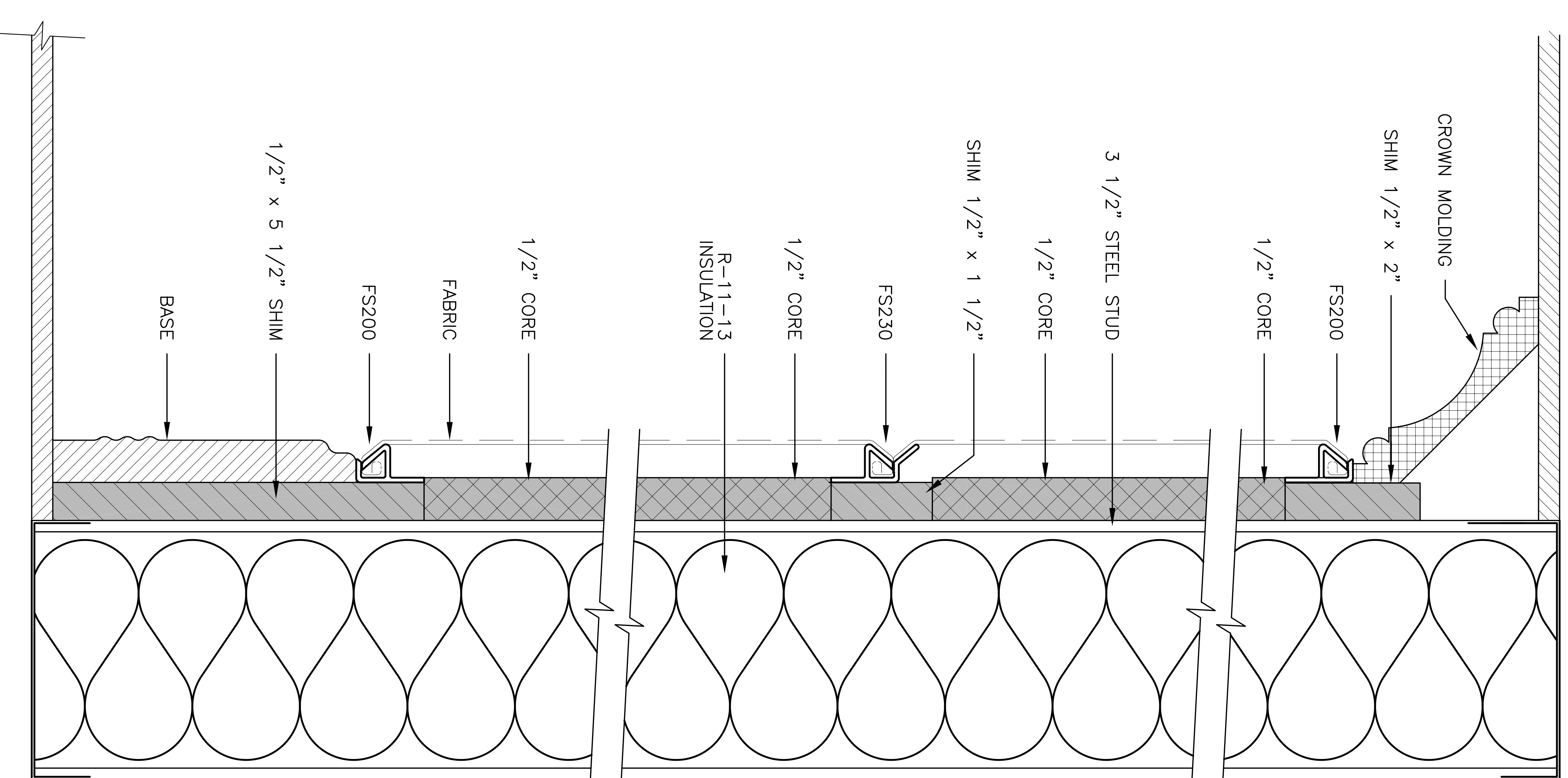
# TYPICAL BASEMENT DETAILS / LAYOUTS



FULL BEVELED JOINT WITH CHAIR RAIL ( 1/2" CORE )



FULL BEVELED JOINT WITHOUT CHAIR RAIL ( 1/2" CORE )



FULL BEVELED JOINT WITH CROWN MOULDING ( 1/2" CORE )