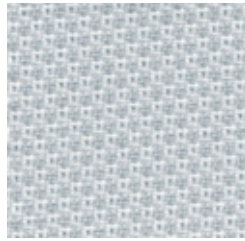
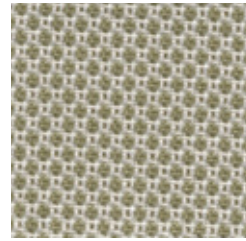


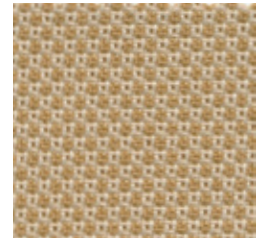
W432/1  
Chalk



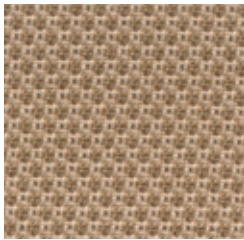
W432/2  
Marble



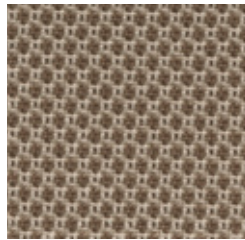
W432/3  
Chino



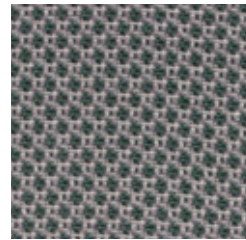
W432/4  
Buttercup



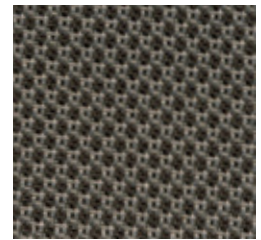
W432/5  
Cappuccino



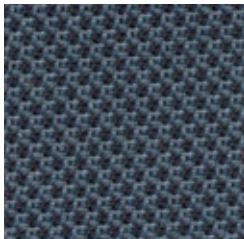
W432/6  
Sage



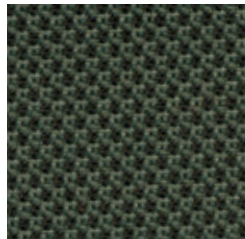
W432/7  
Dove



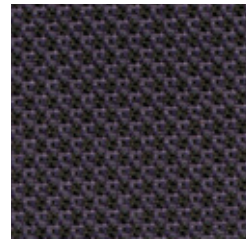
W432/8  
Graphite



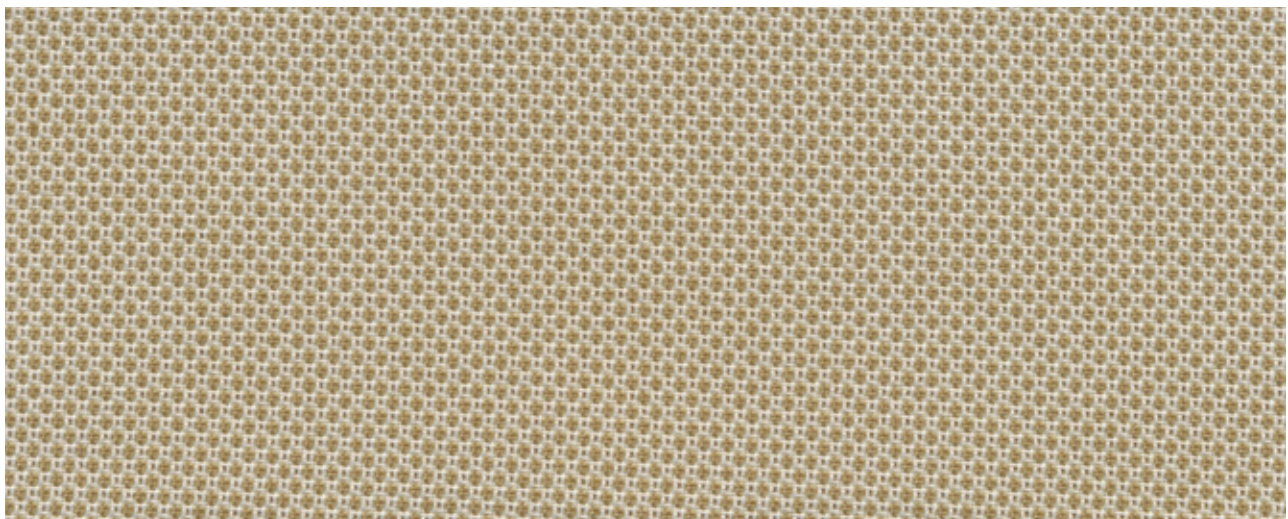
W432/9  
Sky



W432/10  
Haricot Vert



W432/11  
Iris



W432/3  
Chino

**Style**                    **Versatility W432**

---

**Specifications**

---

**Contents**            Polyester 100%

---

**Width**                66"

---

**Weight**              11.5 ounces per linear yard

---

**Backing**             Acrylic

---

**Primary Use**        Panels and Upholstered Walls

---

**Flame Retardant Rating**

UL approved on Knoll systems Morrison, Equity, Reff, Currents and Dividends.

---

**Cleaning Code**    W

---

**Origin**                United States

---

**Notes**                Custom colors available. Minimum custom order is 390 yards.

---

**Copyright**          This style is a copyrighted textile design.

© Knoll, Inc. 1999. All Rights Reserved

THIS VIRTUAL COLOR CARD IS REPRESENTATIVE OF THE FINISHED COLOR TO BE SUPPLIED AND MAY NOT INDICATE AN EXACT MATCH. WHILE EVERY EFFORT IS MADE TO MATCH THIS COLOR TO A MASTER SAMPLE, SOME VARIATION MAY OCCUR DUE TO YOUR COMPUTER MONITOR'S INTERPRETATION. WE DO NOT RECOMMEND THAT YOU SPECIFY FROM THIS CARD AND CANNOT BE RESPONSIBLE FOR VARIATIONS IN SHADE BETWEEN THIS VIRTUAL COLOR CARD AND ACTUAL FABRIC. EXAMINATION OF AN ACTUAL FABRIC SAMPLE IS RECOMMENDED.

APPLICATION TESTING OF THIS PRODUCT IS RECOMMENDED.

©2008 Fabricmate, Inc. • All rights reserved • Unauthorized duplication of these materials is strictly prohibited. • Protected by U.S. copyright laws and international treaties.