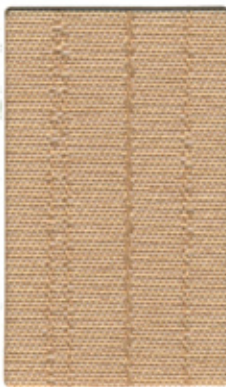


001 Macaroon



013 Glacier



002 Cashew



012 Zinc



007 Pewter



004 Flax



003 Toffee



010 Sprout



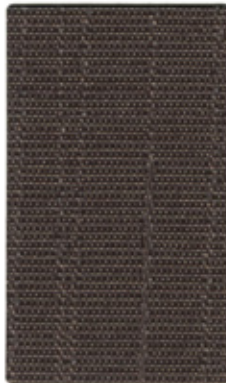
011 Surreal



005 Amber



006 Carob



008 Flue



009 Abyss

Style Maharam - Sketch 901780

Specifications

Contents	100% Polyester
Width	66" (168cm)
Repeat	29 3/4" V, 5 3/4" H (75.6cm V, 14.6cm H)
Application	Systems & Upholstered Walls
Flammability	Class 1 or A rated in accordance with ASTM-E84 unadhered method. Complete test available.
Lightfastness	40+ hours
Approvals	This textile is recognized under the Component Recognition Program of Underwriters Laboratories, Inc. (UL) and has been approved by major systems manufacturers. For current approval information please inquire or visit our website, maharam.com
Customs	This textile can be easily customized
Maintenance	W/S-Cloth with water-based cleaner or mild, water-free dry cleaning solvent

Reduced Environmental Impact

Environmental Improved Manufacturing Process: Heavy metal free dyes with high exhaustion rates. Recycled content: 100% Post-Industrial Recycled Polyester
Reduced Emissions: Air quality emissions tested by Air Quality Sciences as required for listing in the Greenguard Environmental Institute Registry. www.greenguard.org

©2006 Maharam

THIS VIRTUAL COLOR CARD IS REPRESENTATIVE OF THE FINISHED COLOR TO BE SUPPLIED AND MAY NOT INDICATE AN EXACT MATCH. WHILE EVERY EFFORT IS MADE TO MATCH THIS COLOR TO A MASTER SAMPLE, SOME VARIATION MAY OCCUR DUE TO YOUR COMPUTER MONITOR'S INTERPRETATION. WE DO NOT RECOMMEND THAT YOU SPECIFY FROM THIS CARD AND CANNOT BE RESPONSIBLE FOR VARIATIONS IN SHADE BETWEEN THIS VIRTUAL COLOR CARD AND ACTUAL FABRIC. EXAMINATION OF AN ACTUAL FABRIC SAMPLE IS RECOMMENDED.

APPLICATION TESTING OF THIS PRODUCT IS RECOMMENDED.

©2008 Fabricmate, Inc. • All rights reserved • Unauthorized duplication of these materials is strictly prohibited. • Protected by U.S. copyright laws and international treaties.