



# FABRICMATE® SYSTEMS

Buyline

## Tackable / Acoustical Wall Systems

**FABRICMATE®** Systems wall coverings are “Site Fabricated” not pre-made panels. The use of our unique “Track System” allows for monolithic panels in excess of 100 feet!

### *Renovation or New Construction for Sustainability*



*Student Housing - 1/2" tackable/acoustical - 5 1/2' and a 1 1/2' horizontally rail roaded band*

### IMPROVED LEARNING ENVIRONMENT

The acoustical properties will provide clearer speech, less background noise, improved speech privacy and will cut down on sound transmission through walls. Vinyl wrapped panels or painted walls are detrimental to the acoustics of a room.

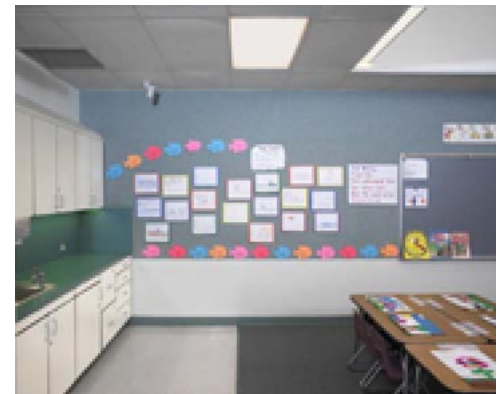
### IMPRESS PROSPECTIVE STUDENTS, PARENTS & EDUCATORS

The high-tech rooms will make a comfortable living or working environment this will not only aid in recruitment but also in retention.

### SUSTAINABILITY & CHANGEABILITY

With it's long life span and virtually no VOC Emissions, **FABRICMATE®** Systems will help both the end user and the environment. Constant repainting or replacing of wrapped panels is not only expensive but wasteful. **FABRICMATE®** Systems wall coverings will reduce the need for painting and wall maintenance.

Made from pre-consumer waste and recycled materials, **FABRICMATE®** Systems coverings are not glued to the core, as wrapped panels are. The coverings can easily be changed at a fraction of the original cost, without the need to change the core material.



*1/2" tackable/acoustical - band and a half horizontally rail roaded*

### FACILITIES DIRECTORS.....

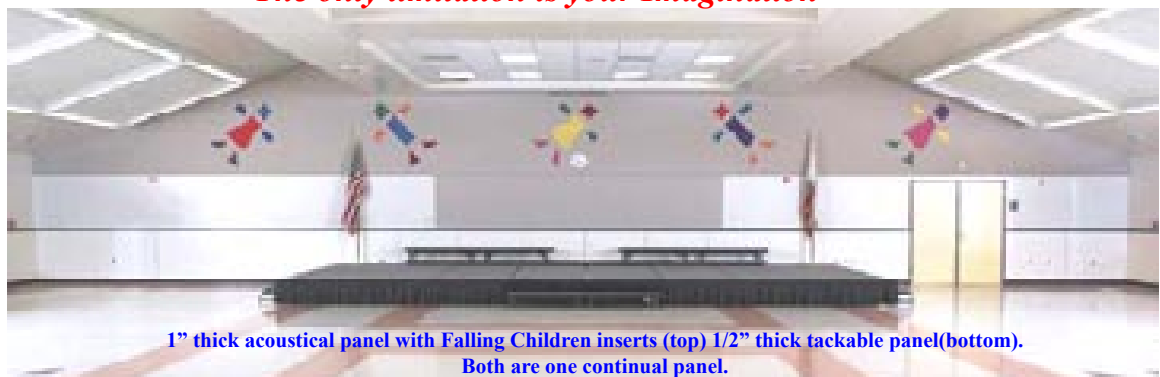
#### ARE YOU TIRED OF PAINTING?

**FABRICMATE®** Systems will cut down on your maintenance costs by outlasting paint. When a panel is damaged or when you decide to remodel, only the covering needs replacement. If the panels are out of warranty your in-house maintenance personnel can easily & cheaply replace the damaged coverings.

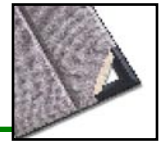
### PROMOTE PRIDE

Even with a tight budget, we can design a layout that will turn a drab classroom or resident hall into a high-tech learning environment.

### *The only limitation is your Imagination*



**1" thick acoustical panel with Falling Children inserts (top) 1/2" thick tackable panel(bottom). Both are one continual panel.**



## Affordable Solutions for Residence Halls

High-Tech Tackable/Acoustical Walls

**UNIVERSITY'S FACILITIES DIRECTORS ARE LEARNING THAT  
FABRICMATE® SYSTEMS  
ARE SOLVING MANY OF THEIR PROBLEMS!**

### RECRUITMENT & RETENTION

Students prefer the high-tech living environment **FABRICMATE®** Systems provides. Parents will appreciate the sense of warmth and comfort added to the living areas. When choosing a school both parents and students take living conditions into account.

### DON'T FORGET THE WALLS!

The most visible item in a room are the walls, however they are often overlooked in renovations and new construction. **FABRICMATE®** is the easiest, most economical way to add superior acoustics, sustainability and life to a room.

### MAINTENANCE

A leading trade publication recently reported that the average Residence Hall is repainted every three years. Some Facilities Directors need to repaint every year. **FABRICMATE®** Systems are durable enough to greatly reduce the need for painting and maintenance.

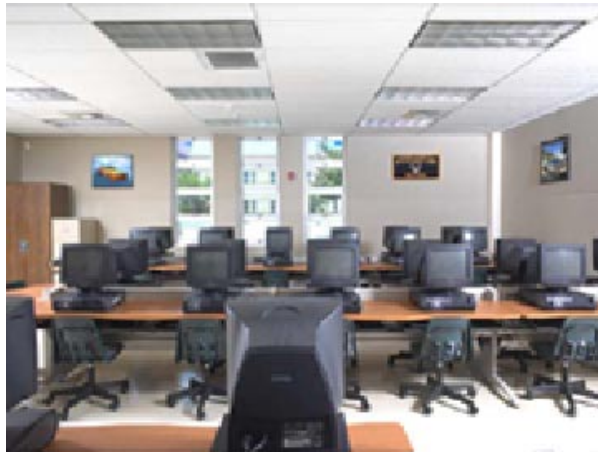
All installations come with a standard 5-year Warranty and 3-year covering replacement program\*. When used as a District Standard we offer a 15 year covering replacement program\*, with free replacement of 10% of the originally installed coverings. \*For further information on our Warranties please call or visit [www.fabricmate.com](http://www.fabricmate.com).

Your in-house maintenance staff can be trained to not only replace the covering on damaged panels but also how to install new panels. Since **FABRICMATE®** is a site fabricated track system, you can eliminate lengthy lead times, purchase orders or subcontractors; therefore coverings can be changed instantly, with minimal room interruption.



Student Lounge

Full wall coverage to maximize acoustical benefits.



Computer Room - 1/2" tackable/acoustical full wall  
2 bands horizontally rail-roded.

### ACOUSTICS & NOISE REDUCTION

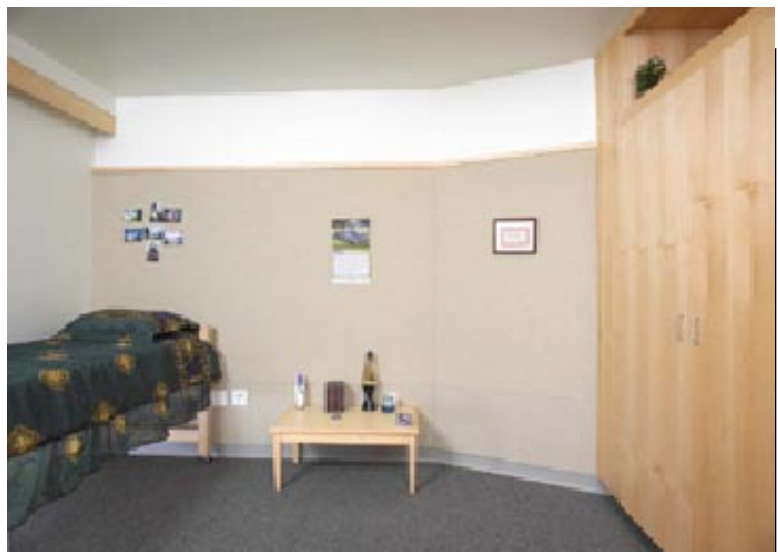
**FABRICMATE®** Systems will vastly improve the acoustics in the room. By reducing the reverberation, speech will sound clearer and sound transmission between rooms will be reduced. This translates into a quieter study area and a more enjoyable living environment.

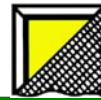
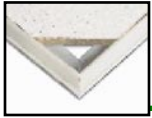


Terratex is a registered trademark of Interface Fabrics Group.

### GREEN FRIENDLY

Using mostly pre-consumer waste and recycled materials **FABRICMATE®** Systems will assist in meeting your environmental needs. Call for specific LEED CI information. The most commonly used covering is Terratex® brand fabrics. The essence of the Terratex brand is aesthetically attractive, durable fabrics that preserve the earth.




**FABRICMATE® SYSTEMS**

## Classrooms, Lecture Halls and Beyond.....

No need to settle for vinyl wrapped panels or paint

### WHY MAKE **FABRICMATE®** SYSTEMS A DISTRICT STANDARD ?

#### WHOLE WALL TACKABLE SURFACES & FREESTANDING TACKBOARDS

Since **FABRICMATE®** is a site fabricated track system, there are virtually no limits on the panel sizes. Whole wall coverage can be accomplished with 2 horizontally railroded panels or can be broken up for two toning of fabric. A single 5 1/2 foot railroded band around the room is an economical compromise between whole wall & Multiple small panels.

#### DURABILITY & SUSTAINABILITY

**FABRICMATE®** Systems stands up to daily abuse, maintaining functionality and appearance - featuring the Terratex® brand of Fabrics. Terratex® classified fabrics are made from 100% recycled materials using increasingly sustainable manufacturing processes, made to meet or exceed standards for quality and performance, and are recyclable at the end of their useful life. The combination of the **FABRICMATE®** Systems with Terratex fabrics, using our innovative manufacturing process allows for long lasting durability, low maintenance and ease in cleaning.

#### ABILITY TO CHANGE COVERINGS EASILY

Coverings are held into place by the track profiles and not glued to the core, renovations can be done at a fraction of the cost of new panels, since only the covering needs to be changed.

#### TRAINING OF DISTRICT PERSONNEL TO MAINTAIN AND INSTALL THE **FABRICMATE®** SYSTEM

Your in-house personnel can be trained to not only change the fabric covering but also to install new panels.

#### EXTENDED 15 YEAR “NO COST” COVERING REPLACEMENT PROGRAM\*

Clients that use **FABRICMATE®** systems as a “District Standard” will receive the covering replacement program, 10% of the originally installed coverings will be replaced at no cost to the client for a period of 15 years, unprecedented in the industry. This program is for panels that need replacement due to items not covered by our standard Warranty i.e. soiling, vandalism, neglect, etc. *\*For further information on our Warranties please call or visit [www.fabricmate.com](http://www.fabricmate.com).*



Classroom with high ceiling. Vertically rail roded between windows, horizontal elsewhere.



Story Telling area - single rail roded band.  
Library (background) two band “two toned” rail roded.



#### WHY HORIZONTAL RAIL-RODED LAYOUTS

BECAUSE **FABRICMATE®** CAN and wrapped panels can't, being site fabricated we are not limited to standard wrapped panel sizes. Most cost effective layouts have no vertical joints, making for tremendous savings when change out is needed due to soiling or damage. Change one **FABRICMATE®** covering or multiple wrapped

#### ENHANCED LEARNING ENVIRONMENT

##### IMPROVED ACOUSTICS

With an N.R.C. superior to Drywall & Vinyl wrapped panels, **FABRICMATE®** Systems will enhance the acoustics of a room, resulting in clearer speech and making it easier to understand the instructor. You will also notice quieter rooms due to the reduced sound transmission between walls and by reducing the reverberation. Multiple people speaking at the same frequency will cause the apparent sound (decibels) to increase.

- Classrooms
- Student Housing
- Audio-Video Rooms
- Auditoriums - Lecture Halls
- City Hall - Counsel Chambers
- Command & Control Centers

- Conference Rooms
- Day Care Facilities
- Resorts & Casinos
- Libraries
- Medical - Retirement
- Modulars

- Movie Theatres
- Offices
- Public Spaces
- Performing Arts Theatres
- Schools
- ETC.....



Step 1; "Track" is laid around the perimeter of the area to be covered.  
(1/2" Beveled Track shown)



Step 2; core material is placed inside the tracked area.  
(1/2" Flametack shown)



Step 3; fabric is secured into the track's locking jaws. The **FABRICMATE** System holds the covering firmly in place, while allowing it to be easily removed and replaced if needed.  
(100% recycled - Terratex® covering shown)



Multi-Purpose Room - Where acoustics and aesthetics meet

## SPECIFICATIONS

1/2" Tackable/Acoustical  
Core: 1/2" Flametack  
Fabric: 100% recycled polyester - Terratex®  
N.R.C. of .40  
ASTM E 84-01 Class "A"

1" Acoustical  
Core: 1" 6 pfc fiberglass  
Fabric: 100% recycled polyester - Terratex®  
N.R.C. of .85  
ASTM E 84-01 Class "A"

1 1/8" Tackable/Acoustical  
Core: 1" 6 pfc fiberglass  
laminated to 1/8" 15pfc fiberglass  
Fabric: 100% recycled polyester - Terratex®  
N.R.C. of .80  
ASTM E 84-01 Class "A"

With a wide range of materials and applications, it is impossible to list them all. Please call to speak to a technical representative.

Full specifications and CAD details can be downloaded at our website  
[www.fabricmate.com](http://www.fabricmate.com)

## CUT DOWN ON CHANGE ORDERS AND COVER UNSIGHTLY WALL SURFACES

Since **FABRICMATE**® is a site fabricated track system, we automatically scribe to existing conditions. Whether a wall has a bow in it or opposing casework is at different elevations, the finished panels will look good to the eye. With pre-made panels scribing and installing on unsquare walls is a time consuming and expensive process.

## CUSTOM IS STANDARD

### ALMOST UNLIMITED PANEL SIZES & SHAPES

Being a Site Fabricated Track System there are no limits on the lengths of panels. Panels over 50 feet are common! With the use of our new **ULTRASONIC bonding process** we are no longer limited by the width of the coverings, a 20'x10' wall can be done in one panel.

## FABRICMATE® SYSTEMS TRACK PROFILES

**Square FS-100 1/2"** used where panels butt into walls, casework, etc., also used as the square intermediate track  
**Beveled FS-200 1/2"** used where panels butt into walls, casework, etc. FS-230 Beveled Intermediate, used where two panels meet.  
All profiles are designed to work with each other. Walls will often have more than one profile incorporated into it.  
For a complete listing of profiles and applications please visit our web site [www.fabricmate.com](http://www.fabricmate.com)

## CORE MATERIALS AND COVERINGS

While 1/2" Flametack or 1" 6 pfc fiberglass with a Terratex® covering are our most common materials; a large range of different cores & coverings can be used.

*It is recommended that first time specifiers contact us, to take full advantage of **FABRICMATE**® Systems unique characteristics.*

# FABRICMATE® Systems

2192 Channel Dr. Ventura, CA 93001

Phone: 805 642-7470 Fax: 805 642-3154

E-Mail [info@fabricmate.com](mailto:info@fabricmate.com)

[www.fabricmate.com](http://www.fabricmate.com)

sweets logos