



## 2019 PRODUCT CATALOG



Wall Panel Systems  
Acoustical Panels  
Tackable &  
Magnetic Panels  
Wall Protection  
Baffles & Clouds  
ReCore® Polyester  
Substrate

**DIVISION 9/10**

WALL FINISHING REDEFINED

## Legendary Support & A Full Catalog of Resources at Fabricmate.com

- CSI Spec Selector
- Material Calculator
- Value Engineering
- Layout Profiles
- DWG Objects for CAD Placement
- Product Knowledge Sheets
- CAD Details
- Training, Tutorials & Quotes



## Leave A Lasting Impression in Every Room on Every Floor

Lowers Maintenance Costs • High-Impact • Sustainable  
Our Wall Finishing Systems are designed to create lasting impressions in an environmentally conscious and budget-friendly way.



## Cut Through the Noise to Improve the Learning & Work Environment

Absorbs Reverberated Sound • Enhances Speech Intelligibility  
Offices, Classrooms, Conference Rooms and Worship Centers are prime targets for our acoustical Wall Finishing Systems.



## Make Your Walls & Hallways Work For You

Durable • Easy to Maintain • Fully Tackable  
Adorn & Protect the walls in high traffic areas with our Low-Maintenance High-Impact Wall Finishing Systems; perfect for school hallways & office corridors.



## Providing Long-Lasting Wall Finishing Solutions For Over 30 Years

Sustainable • Changeable • Lifetime Warranty • Short Lead Times  
Our Wall Finishing Systems can conform to almost any architectural feature and naturally adjust to out-of-true conditions. It is built-to-last and goes up quickly.



### About The Icons

These icons (and others like them) represent the functional focus of a product line as well as its individual characteristics.

Each of our product lines have a functional focus. Such as our **Acoustical** Product Lines which focus on **Acoustical** Functionality. They also benefit from the other advantages present in our system, such as serving as **Tackable** Bulletin Boards and as **High-Impact** Wall Protection.

Each of our Product Lines can and do serve multiple functions.





## TABLE OF CONTENTS

The Fabricmate System	Pages 2 - 3
Wall Finishing Systems	Pages 4 - 5
Component 1: Track	Pages 6 - 7
Component 2: ReCore®	Pages 8 - 9
Component 3: Fabrics	Pages 10 - 11
Premade Panels	Pages 12 - 13
Modular Panel Kits	Pages 14-15
Wall Protection	Page 16
The Fabricmate Guarantee	Page 17

A graphic illustration for a "Lunch & Learn" event. It shows four business professionals (two men and two women) in silhouette, seated around a table with food and laptops. In the background, a man in a white shirt and tie is pointing at a screen displaying a diagram of a wall finishing system. The background is a solid blue color.

 **Lunch & Learn**

Let us Bring The Training & Food To You

- Training While You Eat: In-Person or Webinar
- Catered Lunch From Your Favorite Restaurant

*"We're Here to help you get it right the first time"*

GIVE US A CALL AND SIGN UP FOR A FREE LUNCH & LEARN TODAY! **866-622-2996**



The Fabricmate System is a sustainable adhesive-free stretched fabric system. All of our systems provide shock-absorbency, enhance acoustics and function as tackable bulletin-board surfaces.

Our Systems break down into 3 Delivery Methods:

- 'Site Fabricated' Wall Finishing System
- 'Ready To Hang' Premade Panels
- 'Ready To Install' Modular Panel Kits.

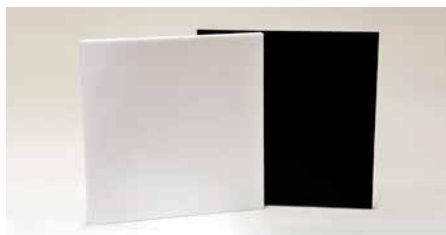
They all benefit from our 3 Component System.

## 3 Components



1

TRACK / FRAME



2

BACKING MATERIALS

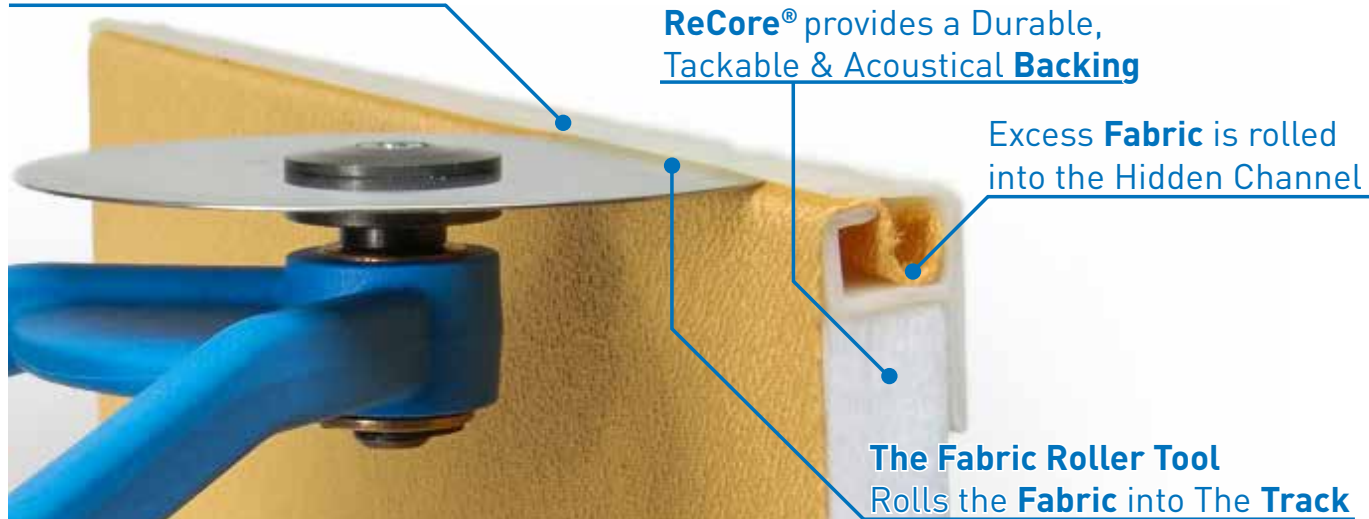


3

FABRIC COVERINGS

The **Track** frames the **Panel** and holds the **Fabric** taut

## A Simple System

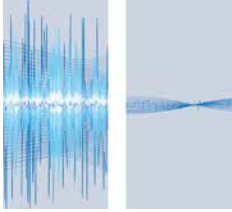


## Legendary Support

WE OFFER A FULL CATALOG OF RESOURCES AT [FABRICMATE.COM](http://FABRICMATE.COM)

CSI Spec Selector • Layout Profiles • DWG Objects for CAD Placement • Value Engineering Training, Tutorials & Quotes • Product Knowledge Sheets • Material Calculator • CAD Details

## The Fabricmate Advantage

**Acoustical**

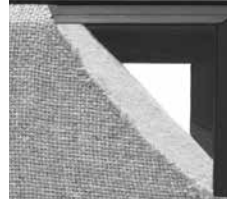
- Absorbs Reverberated Sound
- Greatly Increases Audio Clarity
- Enhances Speech Intelligibility

**Tackable**

- Holds Tighter than Cork
- Will Not Break Down or Crumble
- Naturally Self-Healing

**Durable**

- Shatter-Resistant Frame
- Tougher than Painted Walls
- High-Impact
- Shock Absorbent

**Innovative Floating Fabric**

- Mitigates Visible Damage
- Allows for Easy Changeability
- Adhesive Free
- Looks Great

**Sustainable**

- 60% Post Consumer Content
- Recyclable
- Reduces Waste
- VOC Free

**Magnetic Option\***

- Holds up to 8 Sheets
- Remains Fully Tackable

*\* Inhibits Acoustical Performance*

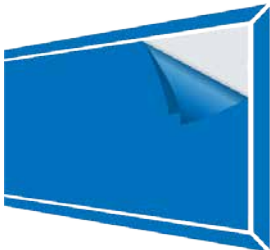
## 3 WAYS TO GO

1

## WALL FINISHING SYSTEM

ON PAGE 4

Conforms to Any Architectural Feature • Significantly Reduces Maintenance Costs



Improve Acoustics and Aesthetics



Cultivate a Professional Environment

2

## PREMADE PANELS

ON PAGE 14

Ready-To-Hang • Useful Anywhere

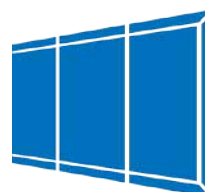


3

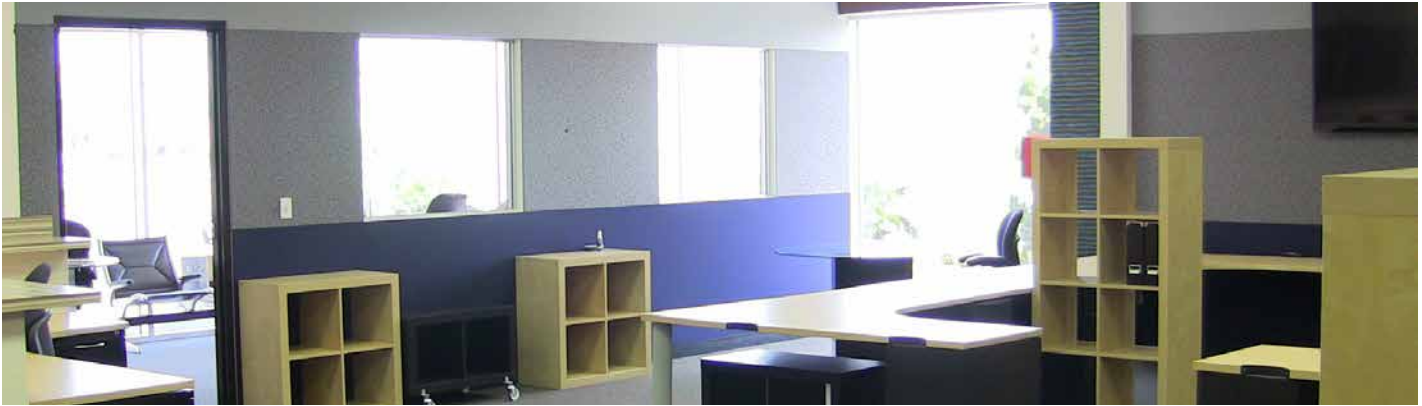
## MODULAR PANEL KITS

ON PAGE 16

Fast & Easy Installation • Unlimited Length







Offices & Classrooms are prime candidates for Wall Finishing

Our 'Site-Fabricated' Wall Finishing System serves as the preferred alternative to paint, upholstery or any other wrapped panel system. It can conform to most architectural features and easily adjust to out-of-true conditions.

The acoustical properties enhance speech intelligibility and reduce sound transmission through walls. Tackability means every surface can be made into a pinnable expanse to hang documents, photos or anything else normally hung on a bulletin board.

## As easy as 1, 2, 3...



Enhance acoustics & aesthetics in your conference rooms



**Step 1:** Attach the Track to the wall using staples or drywall screws



**Step 2:** Infill with ReCore® attach to wall using staples or drywall screws



**Step 3:** Roll the Fabric into the track's Hidden Channel with the roller or rocker tool

## Key Features and Benefits

### 🛡️ CRUSH PROOF EDGES

- Made from High-Impact Plastic • VOC Free • Edges Stay Hard

### ➡️ CONFORMS TO ANY ARCHITECTURAL FEATURE

- Installs on Walls, Ceilings, Soffits & Alcoves • No Unsightly Gaps
- Accommodates Most Architectural Features
- Adjusts to Out-Of-True Conditions

### 💰 SIGNIFICANTLY REDUCES MAINTENANCE COSTS

- More Durable than a Painted Surface • Lasts for Decades
- Naturally Mitigates Visible Damage • Compatible With Most Fabrics

### ❓ WHY PAINT AT ALL?

- Painted Surfaces Can Be Scuffed and Dented
- No Drywall Finishing Required
- No Need to Mud, Texture or Prime; Just Tape the Joints and Go
- Save Time & Money • Significantly Reduces Maintenance Costs



Adorn & Protect the walls in high-traffic areas



Make a Top-Floor Impression in your lobbies & Reception Areas

## A SOLUTION FOR EVERY APPLICATION



**Education**

Classrooms  
Lecture Halls  
Libraries  
Offices  
Gymnasiums  
Hallways  
Music Rooms  
Dormitories



**Commercial**

Hallways & Corridors  
Conference Rooms  
Offices  
Lobbies



**Churches**

Sanctuaries  
Classrooms  
Multi-purpose Rooms  
Foyers & Vestibules



**Tenant Improvement**

Offices  
Lobbies  
Conference Rooms  
Reception Areas



**Hospitality**

Restaurants  
Meeting Rooms  
Dining Areas  
Hotel Suites



**Residential**

Home Theaters  
Home Offices  
Basements  
Bedrooms

## UNLIMITED ARCHITECTURAL FLEXIBILITY



Triple Band Horizontal Layout  
Blended into Full Wall Graphic



Wainscoting on Curved Stem Wall  
for Wall-Protection & Acoustics



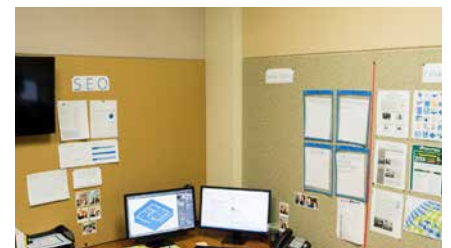
Custom Triple Band Layout with  
Framed Out Windows



Multi-Panel Mosaic Layout with  
Inset Magnetic Panel

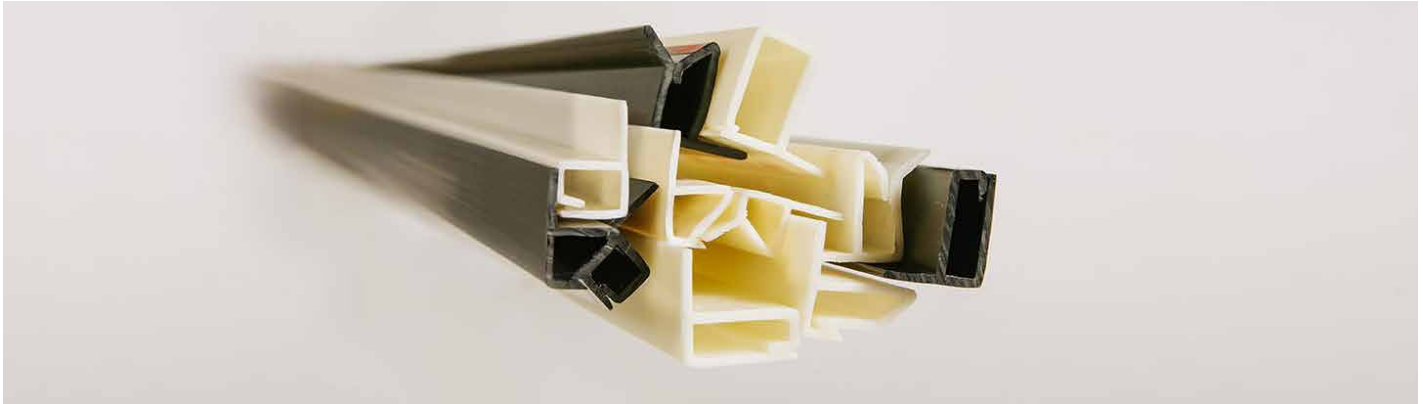


Triple Band Horizontal Layout  
Opposite Wavy Vertical Design



Horizontal Bands Butting into  
Vertical Wrapped Column



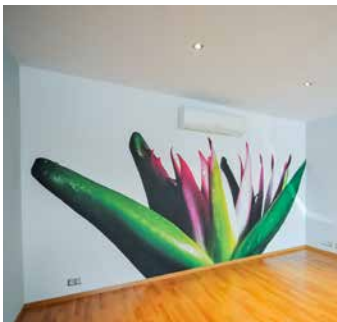


Make your walls look good from every possible angle

Panel Track or just, "Track," as it is referred to in the trade, is the key component of the *Fabricmate 'Site Fabricated' Wall Finishing System*.

The track defines the area to be covered, surrounds the backing and provides a framework in which the fabric cover is inserted, firmly held and stretched over the wall surface. This allows for changeability.

Fabricmate track is available in either a beveled or square profile, 1/2" and 1" heights as well as in various colors. Front-loading tracks are the most popular but we also have side-loading tracks for instances when a fabric covered edge is preferred.



From floor-to-ceiling graphics...



...To full-wall works of abstract art

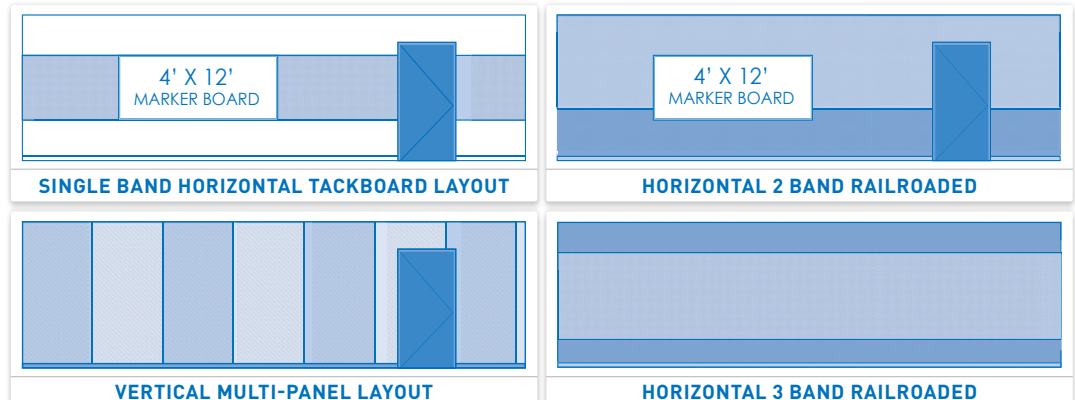


Our track conforms to nearly any architectural feature

## COMMON EDGE PROFILES & COLORS



## COMMON LAYOUTS FOR SITE FABRICATED WALL FINISHING SYSTEM





**1/2" SQUARE PROFILE****SQUARE FRONT-LOAD LOW-LEG****FS105**

1/2" profile  
Low-reveal leg  
Ideal for use around door  
jambs and windows or as  
a Perimeter Piece

**1/2" BEVELED PROFILE****BEVELED FRONT-LOAD****FS200**

1/2" profile  
Very popular  
Creates an attractive  
beveled edge for the  
Perimeter

**1" SQUARE PROFILE****SQUARE FRONT-LOAD LOW-LEG****FS155**

1" profile  
Low-reveal leg  
Ideal for use around door  
jambs and windows or as  
a Perimeter Piece

**SQUARE FRONT-LOAD REGULAR****FS100**

1/2" profile  
Our most popular track  
Can be used as a Perimeter  
and Intermediate piece or  
for Inside Corners

**BEVELED INTERMEDIATE FRONT-LOAD****FS230**

1/2" profile  
Intermediate piece  
Completely hidden when  
installed

**SQUARE FRONT-LOAD HEAVY FABRIC****FS150HF**

1" profile  
Great for heavier fabrics  
Can be used as a Perimeter  
and Intermediate piece or  
for Inside Corners

**SQUARE SIDE-LOAD****FS110**

1/2" profile  
Great as a perimeter piece  
8" of clearance required  
outside the track to install  
the fabric

**BEVELED SIDE-LOAD****FS210**

1/2" profile  
Great as a perimeter piece  
8" of clearance required to  
install fabric

**SQUARE FRONT-LOAD LIGHT FABRIC****FS150LF**

1" profile  
Can be used as a Perimeter  
and Intermediate piece or  
for Inside Corners

**1" BEVELED PROFILE****BEVELED FRONT-LOAD****FS250**

1" profile  
Great as a perimeter piece  
Creates an attractive  
beveled edge

**BEVELED INTERMEDIATE FRONT-LOAD****FS280**

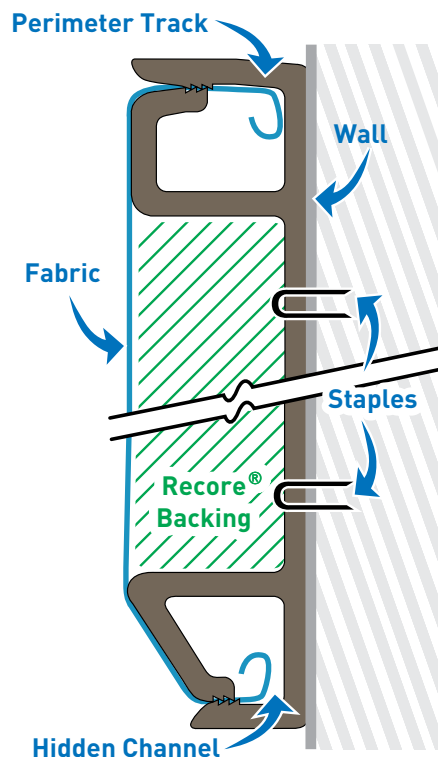
1" profile  
Intermediate piece  
Completely hidden when  
installed

**BEVELED SIDE-LOAD****FS260**

1" profile  
Great as a perimeter piece  
8" of clearance required to  
install fabric

**TECHNICAL CUT-AWAY**

FS100 &amp; FS200

**SQUARE SIDE-LOAD****FS160**

1" profile  
Great as a perimeter piece  
8" of clearance required  
outside the track to install  
fabric

**SPECIAL APPLICATION PROFILES****BEVELED CAP FRONT-LOAD****FP200**

1/2" profile  
Used for our Premade  
Panels & Modular Kits

**BEVELED CAP FRONT-LOAD****FP250**

1" profile  
Used for our Premade  
Panels & Modular Kits



Bare ReCore® is often used to reduce noise on factory floors



ReCore® is quick and easy to install in any application



ReCore® comes in a variety of sizes, densities and color facings



ReCore® is made from 60% post-consumer products

ReCore® is a post-consumer polyester-based multi-purpose insulation. Available in multiple thicknesses, densities and colors. It is ideal as acoustical insulation for panels, walls, and ceilings. It is unsurpassed as a tackable surface while simultaneously providing impact-resistant shock absorbency. It can also be used as ceiling tiles, as a duct liner and as a sound deadening medium below carpeting and wood flooring.

## KEY FEATURES AND BENEFITS

### Acoustical

- Reduces Reverberated Sound
- Enhances Speech Intelligibility

### Tackable

- Holds Tighter Than Cork
- Self-Heals

### Durable

- Impact Resistant
- Shock Absorbent
- Will Not Break Down or Crumble

### Sustainable

- Made From 60% Post-Consumer Content
- 100% Recyclable
- VOC Free
- Environmentally Friendly

### Sensible

- Non-hygroscopic
- Lightweight
- Reduces Maintenance Costs

### Safe

- Antimicrobial
- Anti-fungal
- Non-toxic
- Hypoallergenic
- Naturally Flame Retardant (ASTM E84)

## USED IN:

Machinery Rooms  
Server Rooms  
Basements  
Factories  
Flooring  
Marine  
HVAC

## OPTIONS FOR EVERY APPLICATION

ReCore® can be used in a multitude of applications. You can use ReCore® as:



An acoustical tackable backing for wrapped bulletin board panels



As an shock absorbent backing for wall protection such as wainscoting

See how ReCore® compares to some of the top most common substrates:

THE IMAGE BELOW ILLUSTRATES HOW RECORE® LASTS COMPARED TO OTHER COMMON SUBSTRATES AFTER A YEAR IN WATER

Urethane Foam (Sponge)	Fiberboard	ReCore®	Fiberglass	Rock Wool
				
 → 	 → 	 → 	 → 	 → 
Non-Recyclable	Non-Recyclable	100% Recyclable	Non-Recyclable	Non-Recyclable
				
Moderately Safe	Moderately Safe	Fully Safe To Handle	Unsafe to Handle	Unsafe to Handle
				
Semi-Combustible	Semi-Combustible	Non-Combustible	Semi-Combustible	Semi-Combustible
				
Low Absorption Not Warped by Moisture	High Absorption Warped by Moisture	High Absorption Not Warped by Moisture	Low Absorption Warped by Moisture	Low Absorption Warped by Moisture
				
Does Not Weather Easily	Weathers easily	Does not weather	Weathers easily	Weathers easily
				
Non-Polluting	Causes Air Pollution	Non-Polluting	Causes Air Pollution	Causes Air Pollution

## RECORE® SPECIFICATIONS

THICKNESS	DENSITY	FIRE RATING	ACOUSTICS NRC	TACKABILITY	APPLICATIONS
1/2"	4.5 PCF	ASTM E84 Class A	0.40	Fair	Padded Look & Feel Great for Graphics
1/2"	9.4 PCF	ASTM E84 Class A	0.50	Full	Acoustical • Tackability Wall Protection
1"	3.0 PCF	ASTM E84 Class A	0.60	None	Acoustical Great for Graphics
1"	6.0 PCF	ASTM E84 Class A	0.75	Full	Acoustical • Tackability Wall Protection
2"	3.0 PCF	ASTM E84 Class A	0.85	None	Acoustical Wall Protection
2"	6.0 PCF	ASTM E84 Class A	0.9	Full	Acoustical • Tackability Wall Protection



## CONSIDERATIONS FOR FABRIC SELECTION

### Be Aware of Your Environment

- Most fabrics work well with any of our products and systems
  - Very light colored or sheer fabrics may be too transparent, requiring a liner such as "scrim" to prevent the background from showing through the fabric
- Fabric widths vary by style and are typically 54" and 66"
  - Minimize waste by choosing a fabric of the correct width for your layout
- Some fabrics have a directional weave, prints or repeating patterns
  - This can affect layout and special care needs to be taken in their installation
- For tackable surfaces: choose a fabric that will self-heal
- For magnetically receptive surfaces: make certain that the fabric is not too thick or has a raised pattern as either reduces holding power

### Make Sure Your Fabric is Safe

- All Fabricmate Products & Systems are ASTM-E84 Class A certified
- Commercial building codes require that all fabrics and substrates be ASTM-E84 Class A or NFPA 255 certified
- The use of substrates that are not certified ASTM-E84 Class A, or the use of wooden frames in conjunction with Class A certified fabrics is not recommended
- Our highly trained and knowledgeable staff are available to assist you in making the correct fabric selection

### Some Sound Advice

- Fabric selection can impact the acoustical properties of panels
- Fabrics & Substrates have a Noise Reduction Coefficient rating
  - These ratings relate to the materials ability to absorb sound and will fall between 0 (perfectly reflective) and 1 (perfectly absorptive)
- Applied backings can reduce the N.R.C. of a given fabric
  - The Noise Reduction Coefficient (N.R.C.) is a scalar representation of the amount of sound energy absorbed upon striking a particular surface



Performance Textiles



Acoustical Fabrics



Designer Prints & Patterns



Durable Upholstery



## FABRIC PERFORMANCE GUIDE



- Chosen for acoustically sensitive applications.
- Loosely woven, allowing air to pass through

*Fabrics that have been treated with anything heavier than a 0.5 oz sprayed acrylic backing will generally be poor in an acoustical application.*

Panels being used to absorb unwanted noise should be faced with fabrics that have an open weave and freely allow air to pass through them.

Fabrics that cannot be blown through with ease should be avoided.



- Certified to meet national and local fire codes

*The only test procedure that is acceptable by the national building codes for establishing the Class for a stretch fabric application is the ASTM E84 Unadhered (Steiner Tunnel Test).*

Having a fabric treated with a fire retardant DOES NOT guarantee that the fabric will meet ASTM E-84 Unadhered unless the fabric is treated AND THEN tested by an accredited tested facility.



- Holds up to over 25,000 double rubs

*A double rub is a motion that approximates the wear and tear that comes from someone sitting down on and getting up from an upholstered seat.*

*Regular use for a year is around 3,000 double rubs.*

Panels being used as wall protection should be faced with High-Impact fabrics.

Many of our High Impact Fabrics exceed a 50,000 double rub minimum, meaning they are likely to last more than 15 years.



- Self-Healing
- Plain Weave Construction
- Durable Fibers
- Leaves No Visible Holes



- Made from at least 60% post-consumer products
  - Are often recyclable themselves
- These fabrics are often eligible for LEED Certification points.*



- Stain & Odor Resistant
- Anti-Bacterial & Anti-Fungal

*These fabrics should be used to face panels in environments where sanitation is a primary concern.*



- Suitable For Use With Magnetic Option

*Facing a magnetic panel with a fabric that is too thick or has a raised pattern can reduce holding power.*



- Provides Weave Stabilization
- Increases Durability
- Can Reduce Acoustical Performance

*These fabrics should be used to face panels where durability is more important than acoustical performance.*



- Free of Volatile Organic Compounds
- VOC's can cause compounding health effects, especially indoors.*
- Most of our fabrics are either VOC free or low-VOC.*



Our Premade Panels are a fantastic alternative to ugly cork bulletin boards or fragile glue-on fabric wrapped panels.

They are built-to-last, made from our Revolutionary ReCore® backing and features our high-impact Frame.

Each panel is assembled in the same manner as our innovative Wall Finishing System, ensuring tackable functionality, acoustical performance and shock-absorbent durability.

Mounting hardware is included with each panel, making it easy to put up anywhere.

## WE OFFER A VARIETY OF SIZES

12" x 12"	12" x 18"	12" x 24"
12" x 36"	12" x 48"	12" x 60"
12" x 72"	12" x 84"	12" x 96"
18" x 18"	18" x 24"	24" x 24"
24" x 36"	24" x 48"	24" x 60"
24" x 72"	24" x 84"	24" x 96"
36" x 36"	36" x 48"	36" x 60"
36" x 72"	36" x 84"	36" x 96"
48" x 48"	48" x 60"	48" x 72"
48" x 84"	48" x 96"	

Custom Is Standard: Custom Sizes Available

## AND A RANGE OF FRAMES & FABRICS



1" Brown Frame: Floating Square Edge with Anchorage, Birch Fabric For Acoustic Panels & Wall Protection



1" Natural Frame: Beveled Edge with Anchorage, Birch Fabric For Acoustic Panels & Wall Protection



1/2" Black Frame: Floating Square Edge with Beehive, Raspberry Fabric For Tackable & Magnetic Panels



1/2" Black Frame: Beveled Edge with Rock Star, Limelight Fabric For Tackable & Magnetic Panels

## A SOLUTION FOR EVERY APPLICATION



Conference Rooms



Hallways & Corridors



Offices



Common Areas

## 5 PANEL TYPES FOR EVERY SITUATION

**Tackable**

- ½" Thick Panel
- Provides Some Acoustical Benefits



Many of Our Panels Can Be Hung Outside

## STAY POSTED



Keep Everyone In-The-Loop

**Acoustical**

- 1" Thick Panel
- Fully Tackable
- Protects The Wall



They Look and Work Great When Tiled

## MAKE A SOUND DECISION



Even a Few Panels Can Improve Acoustics

**Graphic**

- 1" Thick Panel
- Fully Tackable
- Full Acoustical Benefits



Improve Acoustics With Photographic Art

## BOLD &amp; BEAUTIFUL CORPORATE IMAGES



Interrupt the Blank Wall Spaces

**MagTack®**

## A BETTER BULLETIN BOARD



- ½" Thick Panel
- Fully Tackable
- No Acoustical Benefit



Keep Your Documents Hole-Free

**Wall Protection**

## ADORN &amp; PROTECT



- ½" Thick Panel
- Fully Tackable
- Chair Rail & Wainscoting



Protection Where It's Needed Most





Wouldn't it be great if you could install full size Acoustical and Tackable Panels or even cover entire walls (up to 8' in height) without needing a full site-fabrication?

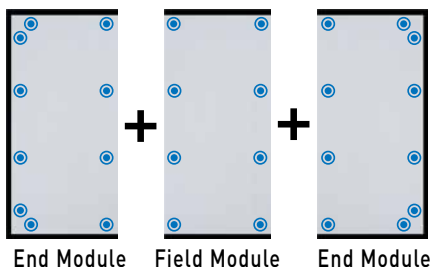
Now you can with our Modular Panel Kits. Our Modular Panel Kits are available in heights ranging from 2' to 8' and in near unlimited lengths to enable you to create a clean unbroken panel.

## TOOLS YOU WILL NEED

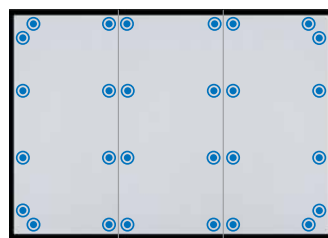


**Power Drill & Level**  
*Screw bit is included*

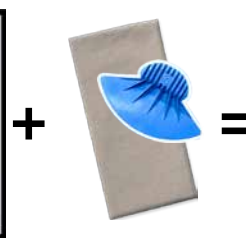
## INSTALLATION IS QUICK & EASY



End Module    Field Module    End Module



Assembled Bare Panel



Fabric and Rocker Tool



Finished Panel

• Optimal Screw Placement



### Step 1: Hang The Panels

Set and level the first End Module  
Mount with Drywall Screws  
Butt each Field Module till desired length is achieved  
Finish with the final End Module



### Step 2: Insert The Fabric

Incrementally insert the fabric into the Frame with the provided Rocker Tool  
The Hidden Channel Jaws will grip the fabric  
Wrinkles can be straightened by resetting the fabric in the frame



### Step 3: Trim The Excess

Cut the excess fabric away  
Leave roughly a 1/2" of fabric  
Rock the excess into the Frame using the provided Rocker Tool  
The Hidden Channel will hide the excess leaving you with a clean panel edge



## 5 KIT TYPES FOR EVERY SITUATION

### Tackable



- ½" Thick Panel
- Provides Some Acoustical Benefits



Easily install Large Professional Surfaces

EVERY SURFACE IS AN OPPORTUNITY



Create the Perfect Communication Surface

### Acoustical



- 1" Thick Panel
- Fully Tackable
- Protects The Wall



Even a Few Kits Can Improve Acoustics

DON'T FIGHT TO BE HEARD



Orient Them Vertically or Horizontally

### Wall Protection



- ½" Thick Panel
- Fully Tackable
- Chair Rail & Wainscoting



Reduce the Regular Wear and Tear

PROTECT &amp; ADORN



Guard Frequently Impacted Surfaces

### MagTack®

GET MORE FROM YOUR WALLS



- ½" Thick Panel
- Fully Tackable
- No Acoustical Benefit



A Safer Alternative to Pins

### Graphic

BOLD &amp; BEAUTIFUL BRANDING



- 1" Thick Panel
- Fully Tackable
- Full Acoustical Benefit



Enhance the Blank Wall Spaces



Wear and tear happens every day. In school hallways, office corridors and everywhere in-between. Eliminate the never-ending maintenance and costly renovations with a Wall Protection System that not only Protects your walls, it Adorns them.

Whether you need wainscoting, chair rails or other wall protection, we provide alternatives to wood or plastic without making you choose Durability over Acoustics, Aesthetics or even Tackability.

## 3 WAYS TO GO

### 1 WALL FINISHING SYSTEM

Conforms to Any Architectural Feature • Significantly Reduces Maintenance Costs



Protection Where It's Needed Most



Wainscoting Reduces Wear & Tear

### 2 PREMADE PANELS

Ready-To-Hang • Useful Anywhere



Protective Chair Rails

### 3 MODULAR PANEL KITS

Fast & Easy Installation • Unlimited Length



Protect Damage Prone Areas

## ADDITIONAL BENEFITS



TACKABLE



ACOUSTICAL



FIRE RATED



SHORT LEAD TIMES



SELF-INSTALL



LOOKS GREAT

- Fully Tackable • Provides Some Acoustical Benefit
- Class A Fire Rated • Short Lead Times
- Quick & Easy To Install • Looks Fantastic

# THE FABRICMATE GUARANTEE

We believe in legacy.

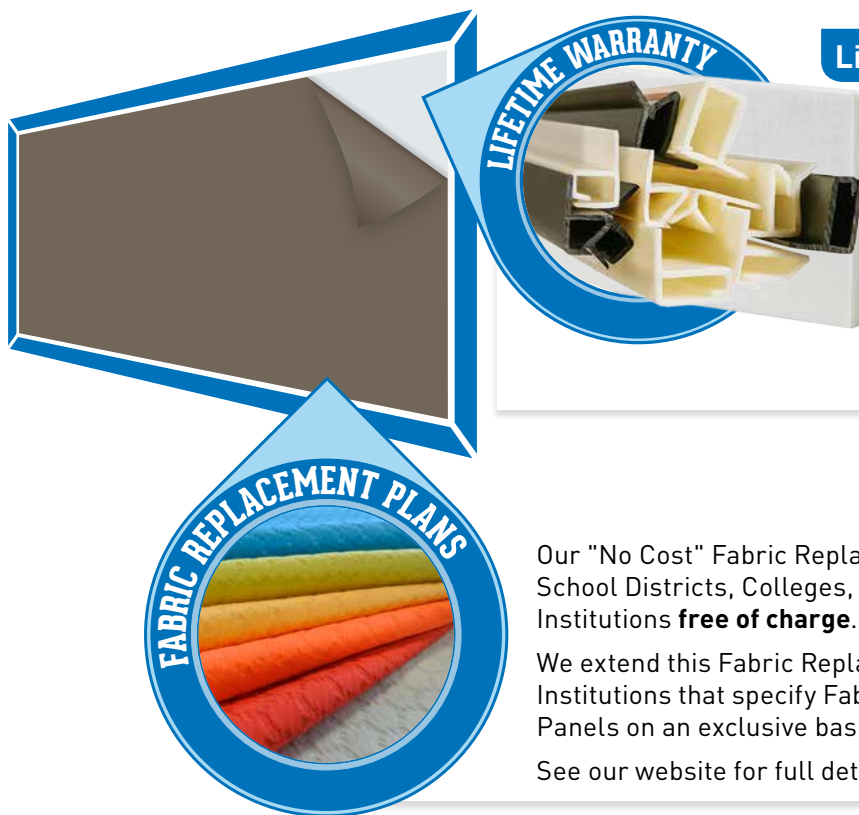
Our Wall Finishing Systems have over 30 years of proven longevity in school districts, government facilities, commercial buildings and residential developments. Our product quality is second-to-none.

As a company we understand the need for ecological responsibility, aiming for sustainability in design to produce products that minimize environmental impact.

We believe in our products and have the warranties to prove it.

We are entirely committed to the satisfaction of our customers. Our products are built-to-last and include a Lifetime Warranty.

Enjoy the peace of mind that comes with an innovative product backed by an industry leading guarantee.



## Lifetime Track & ReCore® Warranty

Our Track and ReCore® Warranty guarantees the workmanship of our Wall Finishing Systems.

We ensure that our products are without defect and installed to conform to their published product specifications.

See our website for full details.

## Fabric Replacement Plans

Our "No Cost" Fabric Replacement Programs are available to School Districts, Colleges, Universities, Companies and other Institutions **free of charge**.

We extend this Fabric Replacement Program to **15 years** for Institutions that specify Fabricmate Wall Finishing Systems and Panels on an exclusive basis.

See our website for full details.



## Premade Panel Warranty

All of our Premade Panels are built-to-last and inspected to ensure quality and longevity

Each Panel comes with a limited lifetime warranty.

See our website for full details.



## Modular Kit Warranty

All of our Modular Kits are built-to-last and inspected to ensure quality and longevity.

Each Kit comes with a limited lifetime warranty.

See our website for full details.

**VISIT [FABRICMATE.COM](http://FABRICMATE.COM) FOR FULL DETAILS**

**Acoustical, Tackable & Durable Wall Finishing**

Premade & Modular Panels

Site Fabricated Solutions

2781 Golf Course Drive, Unit A

Ventura, CA 93003

805-642-7470

[www.fabricmate.com](http://www.fabricmate.com)

