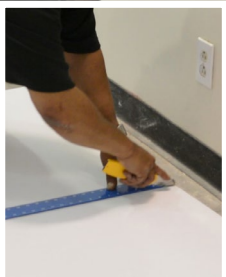
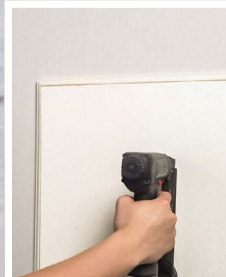




LIGHTWEIGHT & EASY TO HANDLE



EASY TO CUT



EASY TO MOUNT



ReCore® is a lightweight, durable, semi-rigid multi-purpose insulation & substrate. It is used for acoustical, thermal, tackable, and shock absorbent purposes in all types of environments.

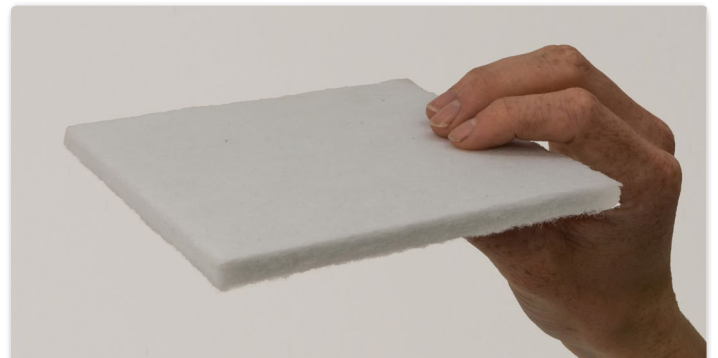
It is fabricated from 100% non-woven polyester made from 60% post-consumer content and is itself 100% recyclable.

ReCore® is non-hygroscopic, resists bacterial and fungal growth, is non-toxic and non-allergenic. It will not rot, deteriorate, or change color over time. The product can be easily fabricated on the job site using standard tools.

ReCore® has no irritating fibers and is free of VOC's including formaldehyde.






Available in a wide range of sizes, thicknesses and densities, ReCore® can even be used in its raw state.



ReCore® has no irritating fibers and is free of VOC's making it perfectly safe to handle.

## 1/4" 10 PCF RECORE FEATURES

Thickness	Density	Fire Rating	Acoustic NRC	Thermal	Tackability
 1/4" THICK	 6.0 PCF	 ASTM E84 CLASS A	 N/A	 1.30	 FULL

Size	48" x 96"	24" x 48"	48" x 96"	24" x 48"	-
Facing	None (White)	None (White)	Black	Black	Colored & Printed
Part #	<b>RC484-160</b>	<b>RC244-160</b>	Coming Soon	Coming Soon	Coming Soon
					

ReCore Features		Feature Description
<b>Thickness</b>	1/4"	Very minimal protrusion .
<b>Density</b>	6 PCF	Offers serious impact resistance and can even be used as a shock absorbent flooring underlayment.
<b>Fire Rating</b>	ASTM E84 Class A	Offers LEED incentives for its Class A Fire Rating.
<b>Acoustic NRC</b>	N/A	Provides a good amount of acoustical performance, reducing airborne noise and transmitted sound.
<b>Thermal</b>	1.30	Provides excellent thermal insulation.
<b>Tackability</b>	Full	Holds pins & thumb-tacks far better than cork and will not break down or crumble.

## APPLICATIONS

- **Acoustical backing** for stretched-fabric panels like the Fabricmate System
- **Tackable/pinnable backing** for stretched-fabric panels and systems
- **Impact resistant wall covering** for wainscoting or full-wall coverage in stretched-fabric wall coverings
- **Aesthetic, acoustical and non-hygroscopic** solution for use in acoustical baffles in aquatic centers, gymnasiums and basements
- **Sound dampening and thermal insulation** in HVAC and Ducting systems.
- **Acoustical and thermal medium** for use on concrete walls in re-purposed structures

## RECORE® LEED CREDIT CONTRIBUTION

- MR 1.2: Materials and Resources
- MR 1.3: Materials and Resources
- MR 4.1: Materials and Resources
- MR 4.2: Materials and Resources
- EQ 4.1: Indoor Environmental Quality

## 1/4" 10 PCF RECORE® SPECIFICATIONS

<b>Description</b>	Non-Woven Polyester Insulation
<b>Sold In</b>	4' x 8' sheets   2' x 4' sheets
<b>Customization</b>	Easily cut with: <ul style="list-style-type: none"> <li>• Utility Knife</li> </ul>
<b>Composition</b>	100 % Non-Woven Polyester
<b>Weight</b>	<ul style="list-style-type: none"> <li>• 0.2 lb per square foot</li> <li>• 6.5 lb per 4' x 8' sheet</li> </ul>
<b>Disposal</b>	Fully Recyclable
<b>Handling</b>	Safe To Handle
<b>Water Vapor Soprtion</b>	< 0.4% by weight Non-Hygroscopic
<b>Weathering</b>	No Change In Appearance
<b>Fungal Growth Testing</b>	ATM C 1338-08 Standard Test Passed: No Fungal Growth After 4 Weeks
<b>VOC's</b>	< 0.1%