





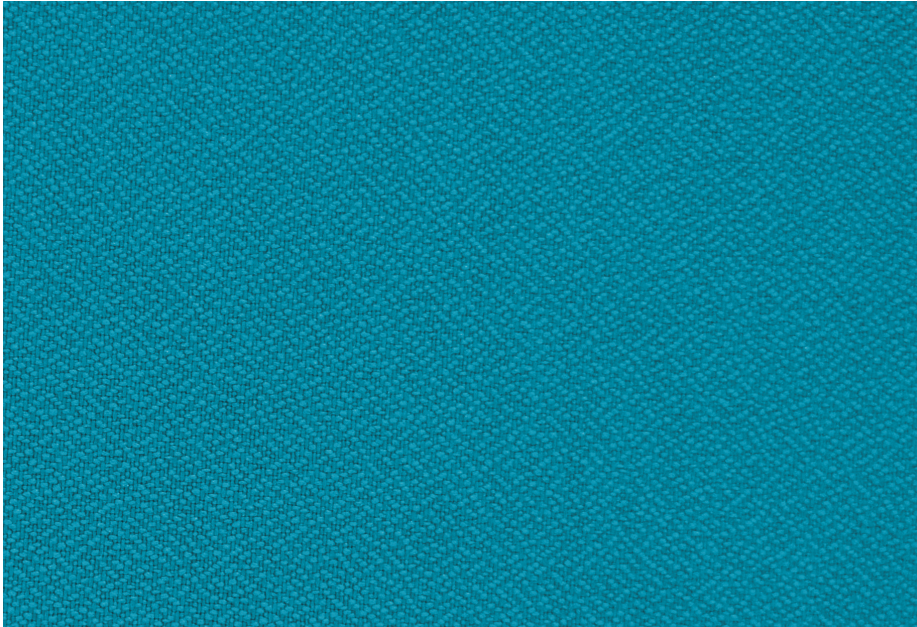
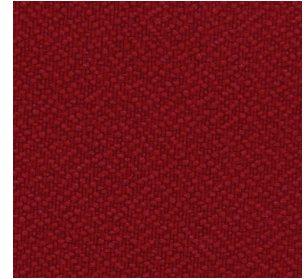


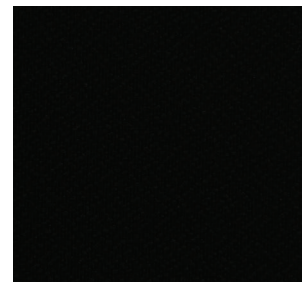
MOTIF		233
MULTI-PURPOSE FABRIC	IDEAL FOR: Offices, Music Studios, Home Theaters, Educational and Corporate Environments, and more.	     
66" usable width		



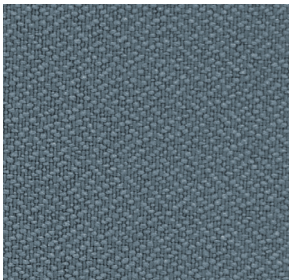
 **Aqua | 001**



 **Cherry | 003**



 **Ebony | 005**



 **Ash | 002**



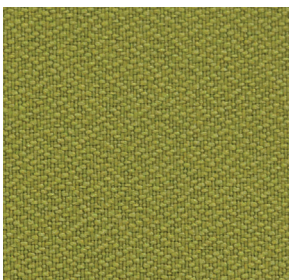
 **Straw | 010**



 **Royal Blue | 007**



 **Stone | 009**



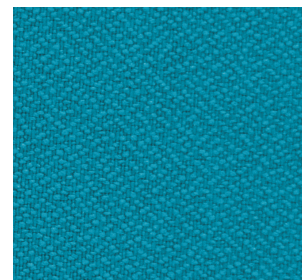
 **Meadow | 006**



 **Cream | 004**



 **Snow | 008**



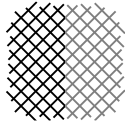
 **Aqua | 001**

MOTIF

233

MULTI-PURPOSE FABRIC

66" usable width



Every effort has been made to ensure the color accuracy. However, color may vary. We recommend ordering a fabric sample.

IDEAL FOR: Educational and Corporate Environments, Music Studios, Home Theaters, and more.

ALSO GREAT FOR: Acoustics, Tackability, Wall Protection, Furniture, and Chair Rails.



DESCRIPTION

Motif is the standard and sets a high bar for other Fabrics. This fabric is high-functioning and aesthetically pleasing. It can be used for both acoustic and tackable purposes and is great for high-traffic areas. Available in a number of colors, mix and match to customize your space. Motif is a consistent, classic, and beautiful finish for any area that needs functionality and style.

SPECIFICATIONS

Content: 100% Polyester

Weight: 15.41 ± 1.0oz / linear yard

Width: 66" usable

Repeat: N/A

Directional: No

Colorfastness to Crocking: Grade 5 min. dry & Grade 5 min. wet
(AATCC 8 - 2016)

Colorfastness to Light: Grade 4 min. at 40 hours
(AATCC 16 Option 3 - 2014)

PERFORMANCE WALL COVERING



- Chosen for acoustically sensitive applications
- Allows air to pass through
- Can be used for speaker covers



- Self-healing (Leaves no visible holes)
- Durable fibers
- Plain-Weave construction



- Certified to meet national and local fire codes (NFPA 701)




- Best suited for high traffic interior spaces
- Ideal for hallways, corridors, and bulletin boards



- Highly resistant to wear
- ASTM D4157-13 (100,000 Double Rubs)



- Standard Care Label W-S
- For water based stains use water base cleaning agents only, do not use solvents
- For oil based stains use solvent cleaners only

*Any colors with a  **QuickShip** icon will ship within 1 (one) business day. Additional colors available upon request.