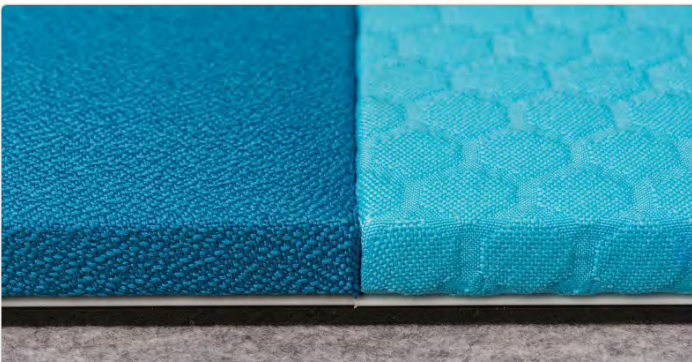




FS110 is used as a perimeter piece for 1/2" square profile installations. Available in a range of colors. Pantone Match Color Available. (Lead times & minimum quantities apply)

This Track is perfect for use with our Fabric Wall Finishing System. Combined with our ReCore® Backing and Fabric, this track can be used to create anything from full-wall photographic murals to smaller acoustic or bulletin-board panels as well as Wainscoting and other types of Wall-Protection.




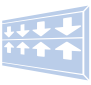
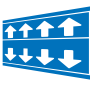



FS110 JOINT & EDGE ON SAMPLE PANEL
BEEHAVE & ANCHORAGE FABRIC SHOWN

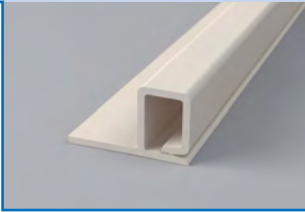


FS110 JOINT & EDGE ON SAMPLE PANEL
FS110-NAT (NATURAL) & FS100-NAT (NATURAL) SHOWN

TRACK FEATURES

Height	Edge Profile	Load Direction	Seam Usage	Edge Usage	Other
					
1/2" THICK	SQUARE	SIDE	NO	YES	CURVABLE

Color	Natural
Part #	FS110-NAT

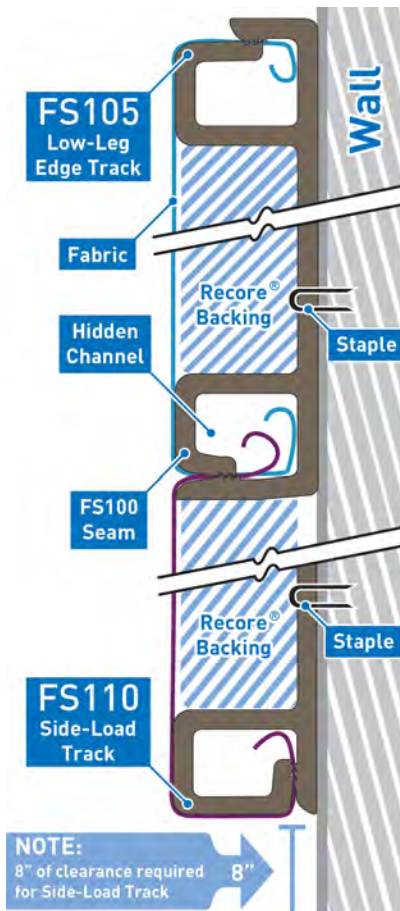


Since FS110 is completely hidden when installed, we offer it in Natural only.

Pantone Match Colors are available but extended lead times and minimum quantities apply.

Track Features		Feature Description
Height	1/2"	Half-Inch Track has minimal protrusion and is ideal for Graphic Wall Panels, Wall Protection, Tackable Wall Finishing
Edge Profile	Square	The square profile produces clean, crisp joints and edges.
Load	Side-Loading	Side-Loading Track hiding the jaw against the wall and wraps the fabric around the face and edge of the panel.
8 Inches of clearance is required for all Side-Loading Track to allow room for inserting the fabric with the roller or rocker tool.		
Usage	Edge	Used as a perimeter track with any 1/2 inch substrate.

TECHNICAL CUTAWAY



FS110 SPECIFICATIONS

Description	Durable PVC Track for use in Fabric Wall Finishing
Sold In	5' Lengths
Installation	Mountable with <ul style="list-style-type: none"> • Drywall Screws • 18 Gauge 1/4" Full-Crown Staples • Adhesive
Customization	Easily cut with: <ul style="list-style-type: none"> • FS830-001 Chamfer Cutter Tool • 180 Tooth 10" Plastic Weight Chop Saw
Composition	100 % Durable PVC
Dimensions	5' x 0.5" x 0.75"
Weight	0.56 lb per 5' stick
Disposal	Fully Recyclable
Handling	Safe To Handle
Fire Rating	ASTM E84 Class A
VOC's	< 0.1%