

FS150



SQUARE FRONT-LOAD
FABRIC MOUNTING FRAME

FABRICMATE
WALL FINISHING SOLUTIONS

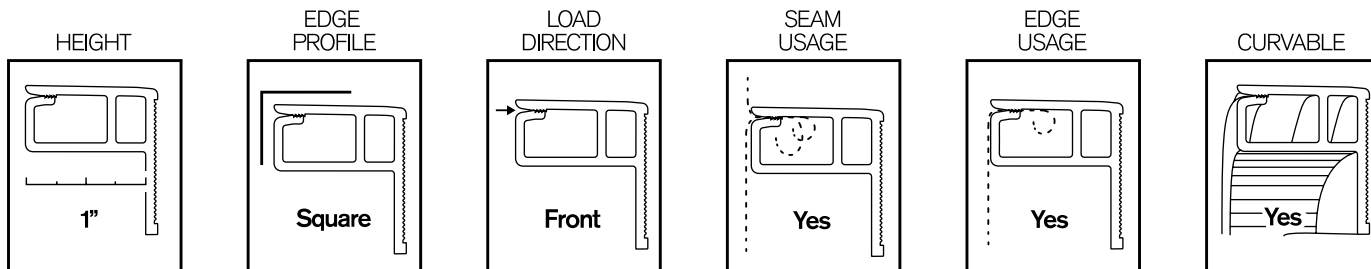


Acoustics and Wall Protection in Lobby / Hallway

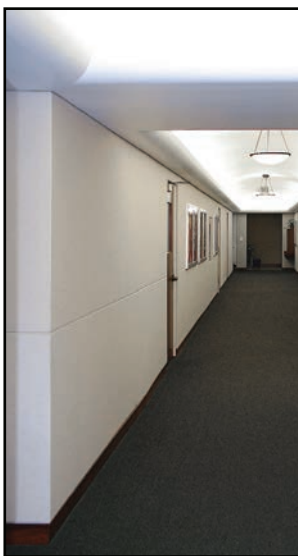
FS150 can be used as a perimeter, intermediate, and as an inside corner piece for 1" square profile installations. The FS150 Frame offers additional structural support and is perfect for use with our Fabric Wall Finishing System. Combined with our ReCore® Backing and Fabric,

this Frame can be used to create anything from full-wall photographic murals to smaller acoustic or bulletin-board panels as well as Wainscoting and other types of Wall Protection. Use our Flex-Frame for creating curved designs or installing on rounded surfaces.

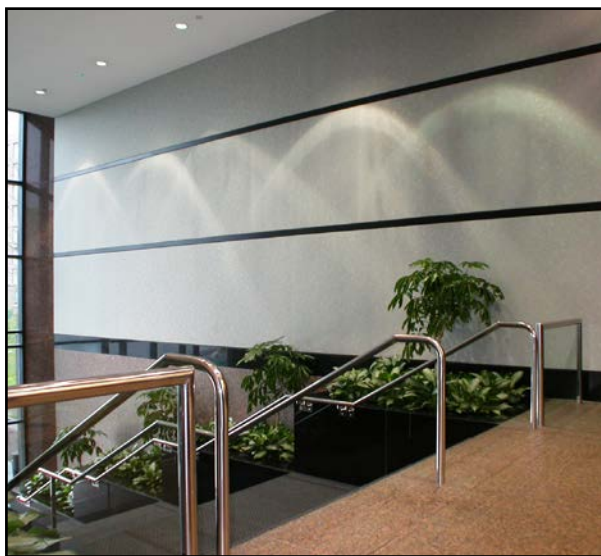
FS150 FRAME FEATURES



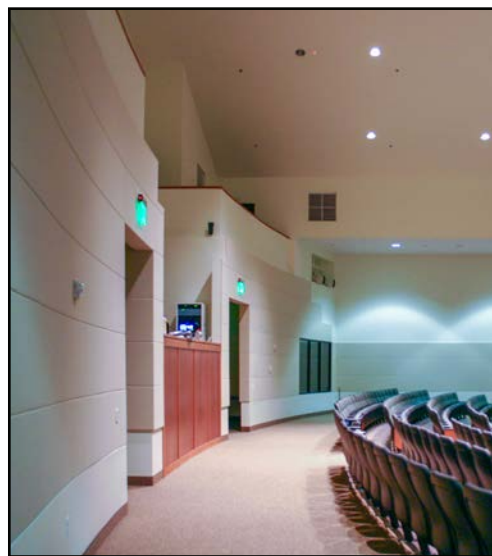
100% uPVC | CRUSH PROOF | FULLY RECYCLABLE | FLEXIBLE | EASILY CUSTOMIZABLE | SAFE TO HANDLE



Acoustics and Wall Protection in Hallway



Acoustics & Aesthetics in Lobby / Offices



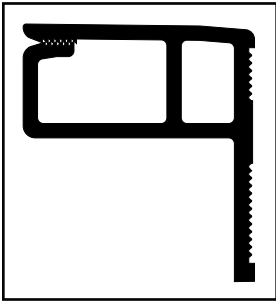
Acoustics, Wall Protection, & Aesthetics in Worship Environment

FS150 - 1" SQUARE FRONT-LOAD

ACOUSTICS | WALL PROTECTION | TACKABILITY | GRAPHICS

Elevate your style with our Deco-Frame® options. Available in multiple looks and styles (some examples below), these custom edges really push your installation to the next level. Also available in Natural and other colors and styles or can be customized for the ultimate personalized look and feel.

Color & location of edge designs may vary from those depicted below.



FS150 Profile (Actual Size)



Black



White



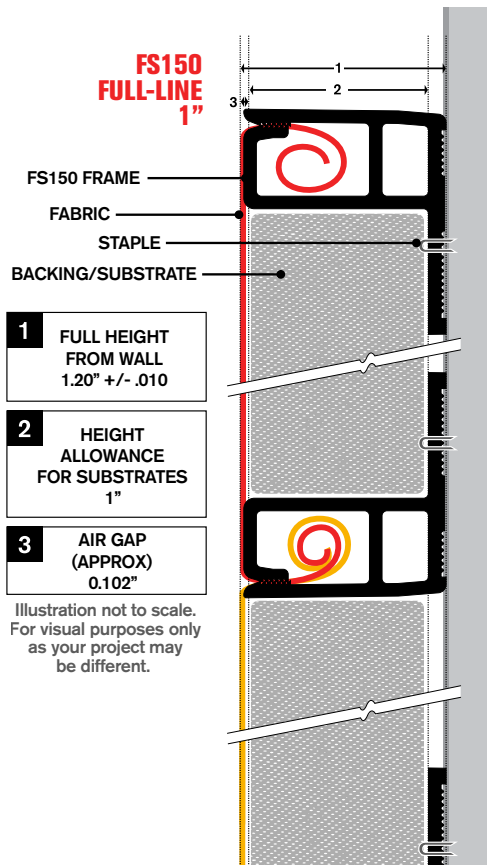
Brushed Aluminum




Wood Grain

FS150 FRAME FEATURES		FEATURE DESCRIPTION
Height	1"	One-Inch Frame is ideal for acoustic applications, offering excellent sound absorbency, tackability, and wall protection
Edge Profile	Square	The square profile produces clean, crisp joints and edges
Load	Front-Load	FS150's front loading feature allows it to be placed up against almost any surface including walls, door moldings, etc
Seam Usage	Yes	FS150 can be used to create seams or joints with any 1" substrate
Edge Usage	Yes	FS150 can be used as a perimeter with any 1" substrate
Other	Curvable	We offer our curvable Flex-Frame (SKU: KF150) or FS150 can be easily modified on-site to create curved joints

FS150 TECHNICAL CUTAWAY



FS150 SPECIFICATIONS

Description	Durable uPVC Track for use in Fabric Wall Finishing
Sold In	5' Lengths
Installation	Mountable with <ul style="list-style-type: none"> 18 Gauge 1/4" Narrow-Crown Staples Drywall Screws Staples & Adhesive (Liquid Nails or PL200 Recommended)
Customization	Easily cut with: <ul style="list-style-type: none"> Fabricmate® Chamfer Cutters 180 Tooth 10" Plastic Weight Chop Saw
Composition	 100% Durable uPVC (No Phthalates or BPA, Does not decompose, is weather-resistant)
Dimensions	5' x 1.175" x 0.625"
Weight	1.2 lb per 5' stick
Disposal	Fully Recyclable
Handling	Safe To Handle
Fire Rating	ASTM E84 Class A
VOC's	< 0.1%